

NAPANEE

DUTCH KITCHENET

Built Like Fine Furniture

Specially
designed
Unit
Systems
for all
types of
buildings



COPPES BROS. & ZOOK
NAPANEE • INDIANA

NAPANEE

DUTCH  KITCHENET

Built Like Fine Furniture



Specially designed unit systems
for all types of buildings.

Manufactured by **COPPES BROS. & ZOOK** Nappanee, Indiana

The Napanee Line



THE present line of Napanee merchandise is the outgrowth of forty-nine years of manufacturing experience. Our aim, over this period of years, has been to produce high-class merchandise. At no time have we sacrificed quality for price. For these reasons we have established an enviable reputation as manufacturers of quality products.

Since 1914 our factory has been devoted exclusively to the manufacture of kitchen cabinets. In addition to our cabinet factory we operate our own sawmill. All of the lumber which goes into our cabinets is sawed in our mill and dried in our dry kilns. Thus we can be sure that all of the lumber we use is of the best grade and properly dried.

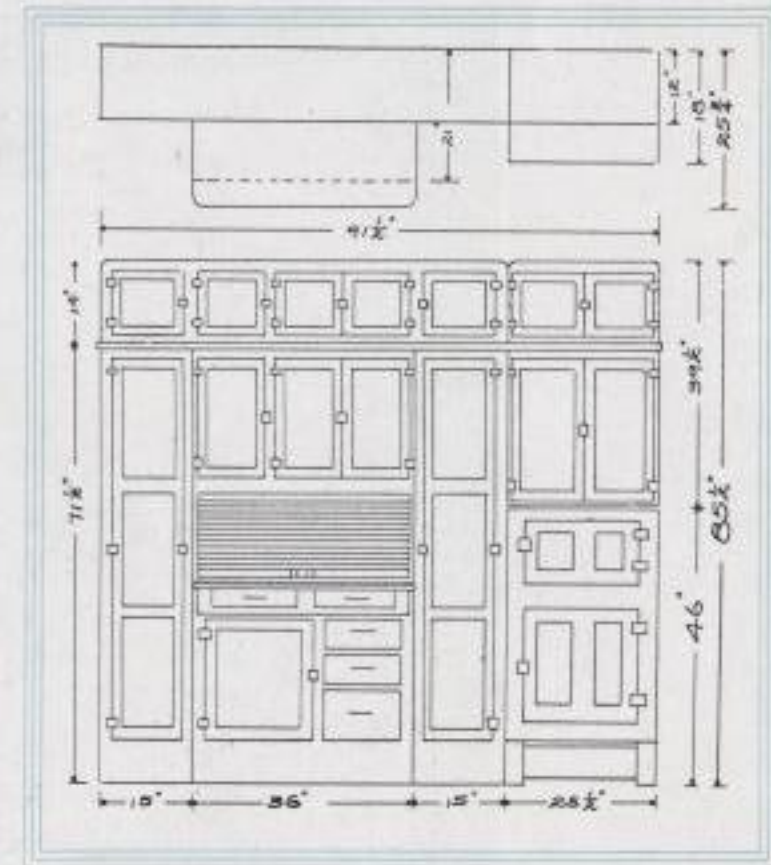
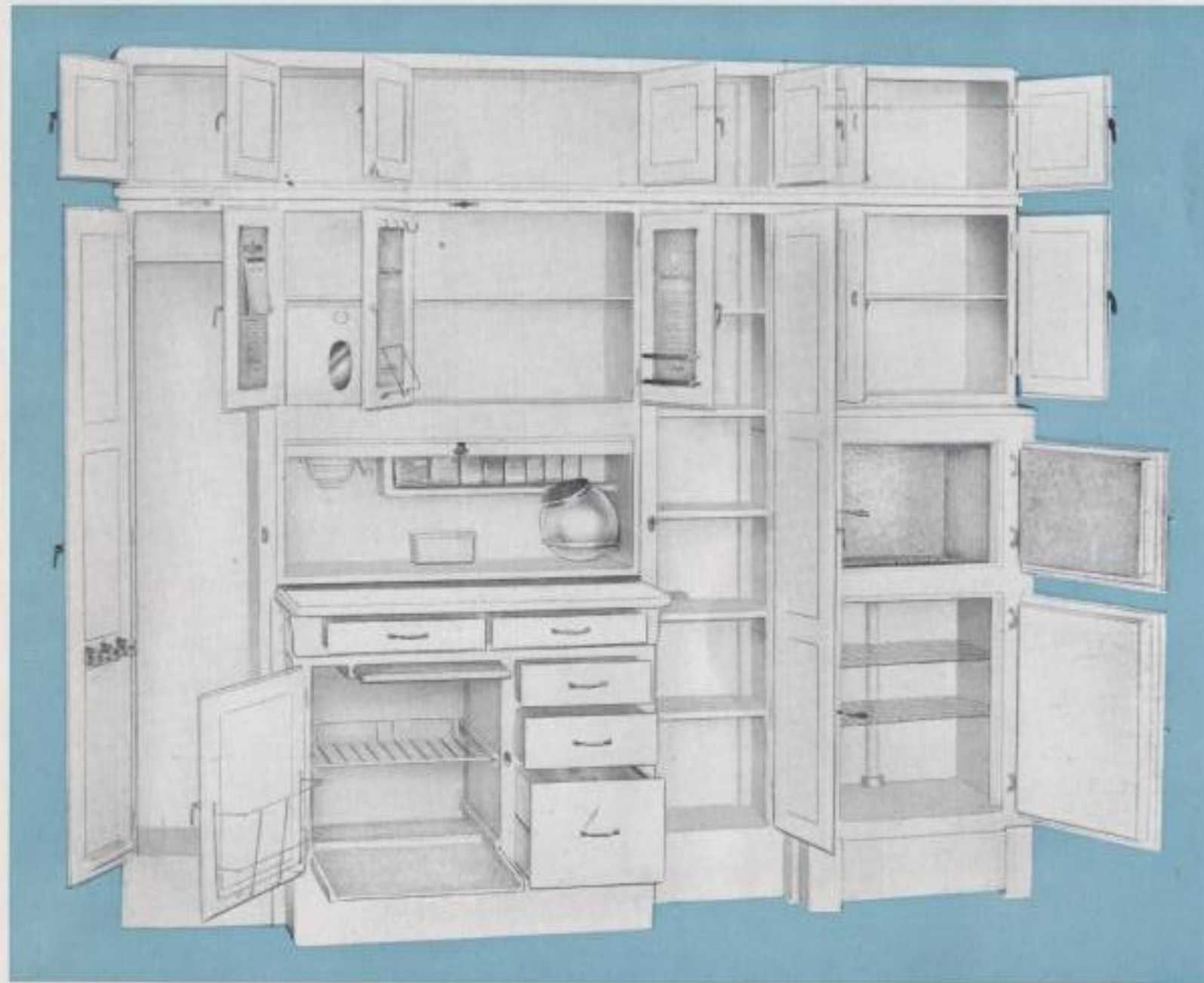
The line of cabinets, side-units and cupboards which we offer for built-in purposes was designed after we had made a careful and extensive study of present building tendencies. In developing this line we have endeavored to produce special kitchen units which are practical from all standpoints of convenience, size, and adaptability in combinations to meet varied space requirements in homes and apartments.

The following pages illustrate a few of the possible combinations. With kitchen cabinets ranging in width from 24 inches to 48 inches, side-units 15 inches wide, and our refrigerator, we are able to equip any wall space from 15 inches up to 103½ inches in width. Small variations are easily taken care of with fill-in strips as shown on page 10.

The dimension sheet on the last page is valuable in making up plans, and shows at a glance which Napanee units to use in filling a certain space. Remember that Napanee Dutch Kitchenets are scientifically designed kitchen cabinets and should in no way be compared with the ordinary built-in cupboard. They have been nationally advertised for many years and have a consumer appeal which assures you that the increased value of your property is several times greater than the actual cost of the equipment.

We have representatives in all of the principal cities and further information can be obtained from them, or direct from the factory.

Better Kitchen Equipment for Better Kitchens

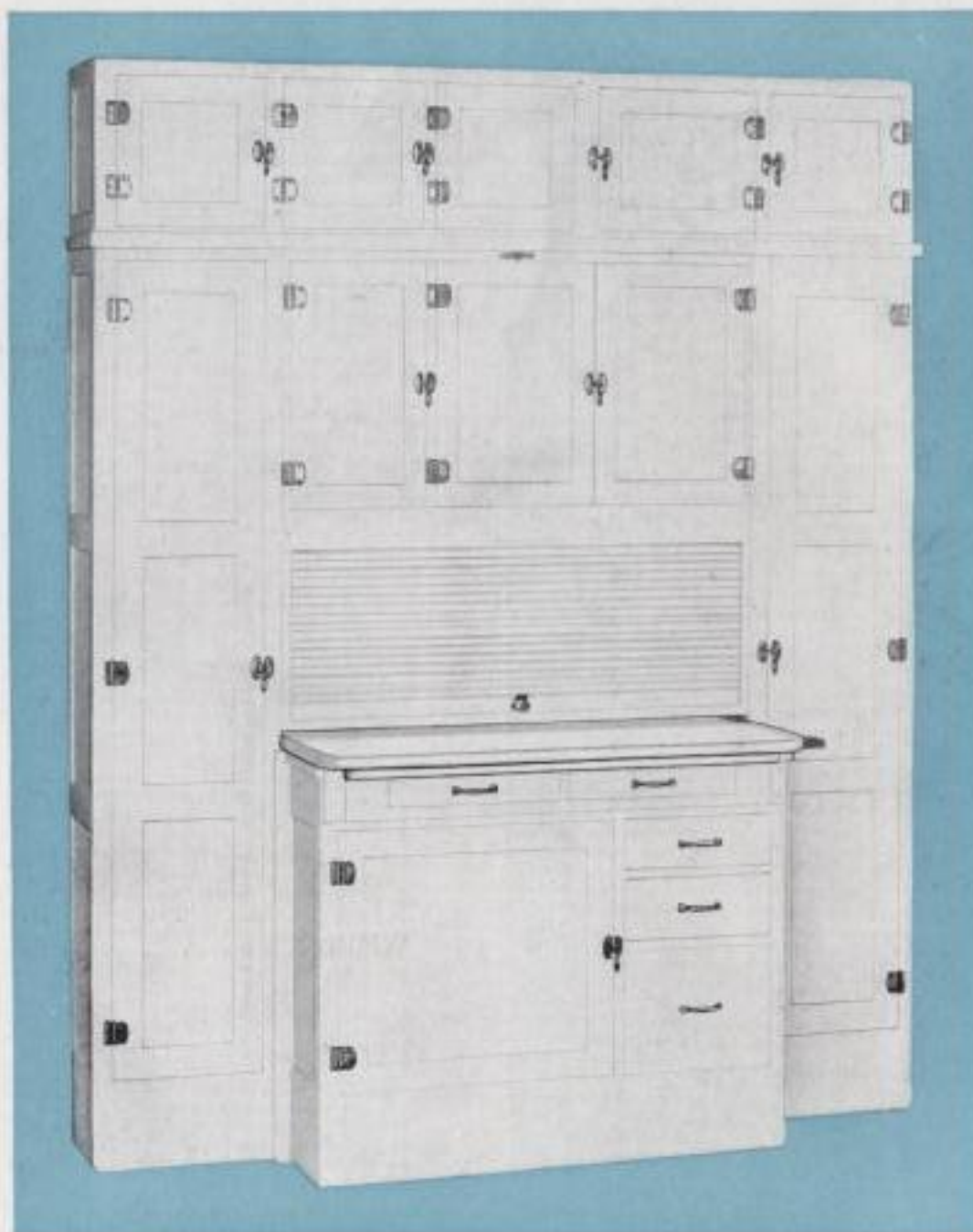


Cabinet TX, Broom Closet BX, Dish Cupboard DX, Top Cupboard 1466, Refrigerator RX, Refrigerator Cupboard FR.

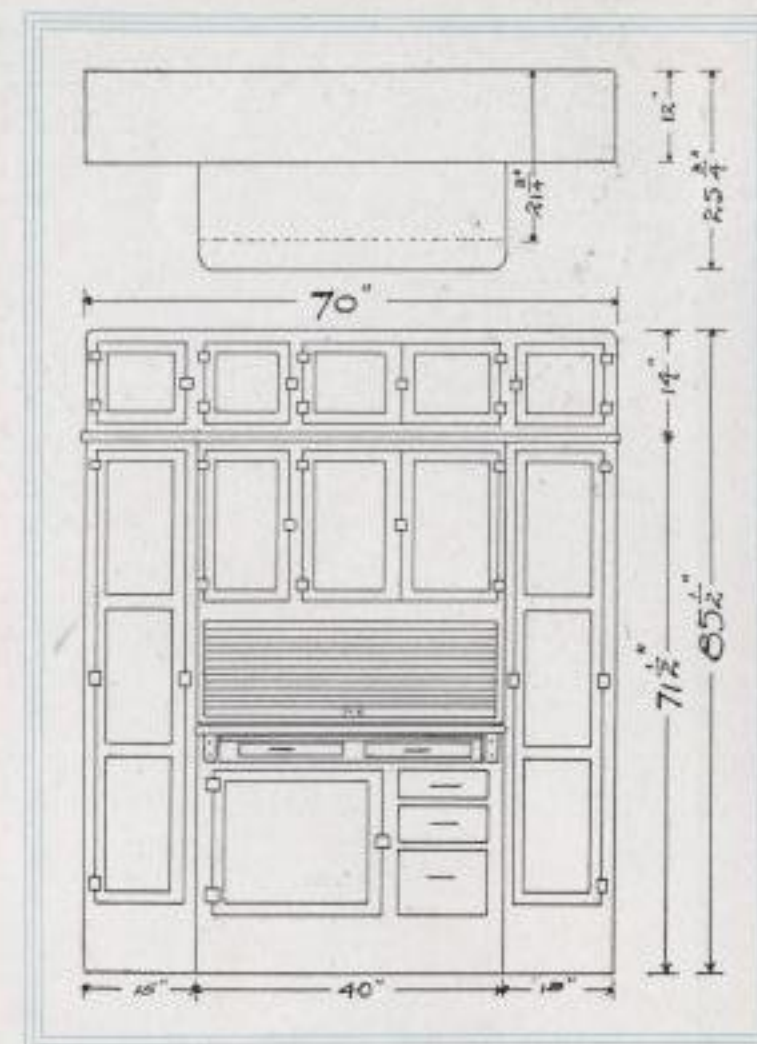
Width 91 1/2 inches
 Height 85 1/2 inches
 Depth Cabinet Base 21 inches
 Depth Refrigerator Base 18 inches
 Depth of Porcelain Top 25 3/4 to 34 1/2 inches
 Depth of Cabinet Top, Side Units
 and Top Cupboards 12 inches
 Using Cabinet WX, width 79 1/2 inches
 Substitute No. 1454 Top Cupboard for No. 1466
 Using Cabinets KX and LX, width, 95 1/2 inches
 Substitute No. 1470 Top Cupboard for No. 1466
 Using Cabinet PX, width 103 1/2 inches
 Substitute No. 1478 Top Cupboard for No. 1466

HERE is the ideal combination which completely meets the requirements of the modern kitchen. Illustrated above is our Cabinet Model TX combined with Broom Closet BX, Dish Cupboard DX, Refrigerator RX, and Top Cupboards FR and No. 1466. Each piece is of Standard Napanee quality and construction.

All units finished in either white or grey enamel, or one coat of flat undercoat.



A NEAT, compact combination built around a scientific kitchen cabinet, which will save countless steps. This type of combination can be furnished to fit any wall space from 54 inches up to 78 inches. The combination shown above consists of Cabinet LX with built-in breakfast table, Dish Cupboard DX, Broom Closet BX and Top Cupboard No. 1470.

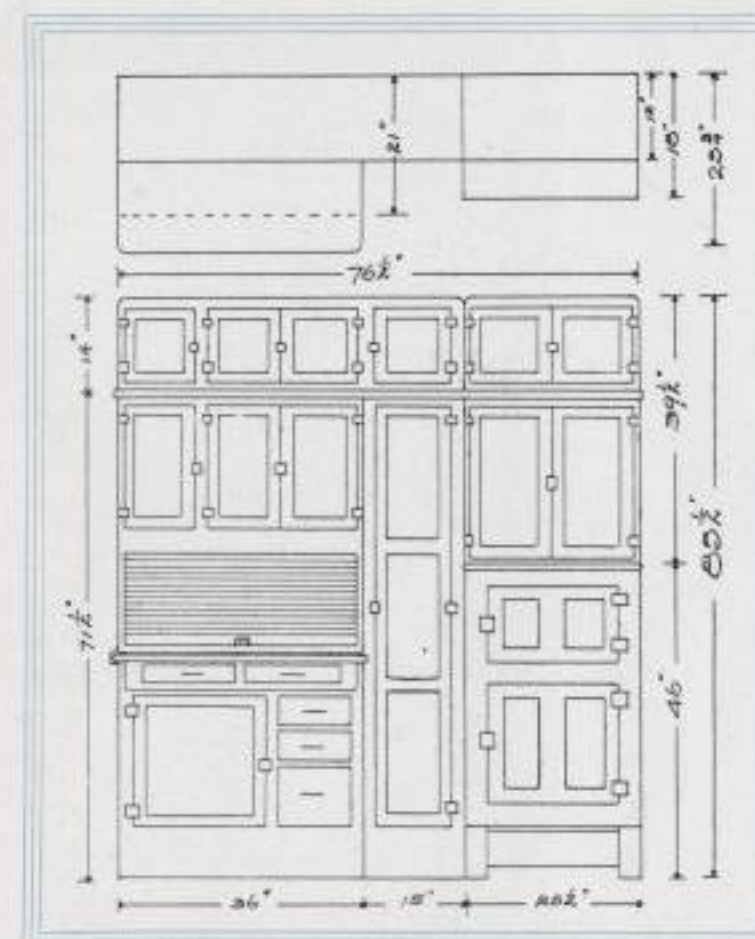
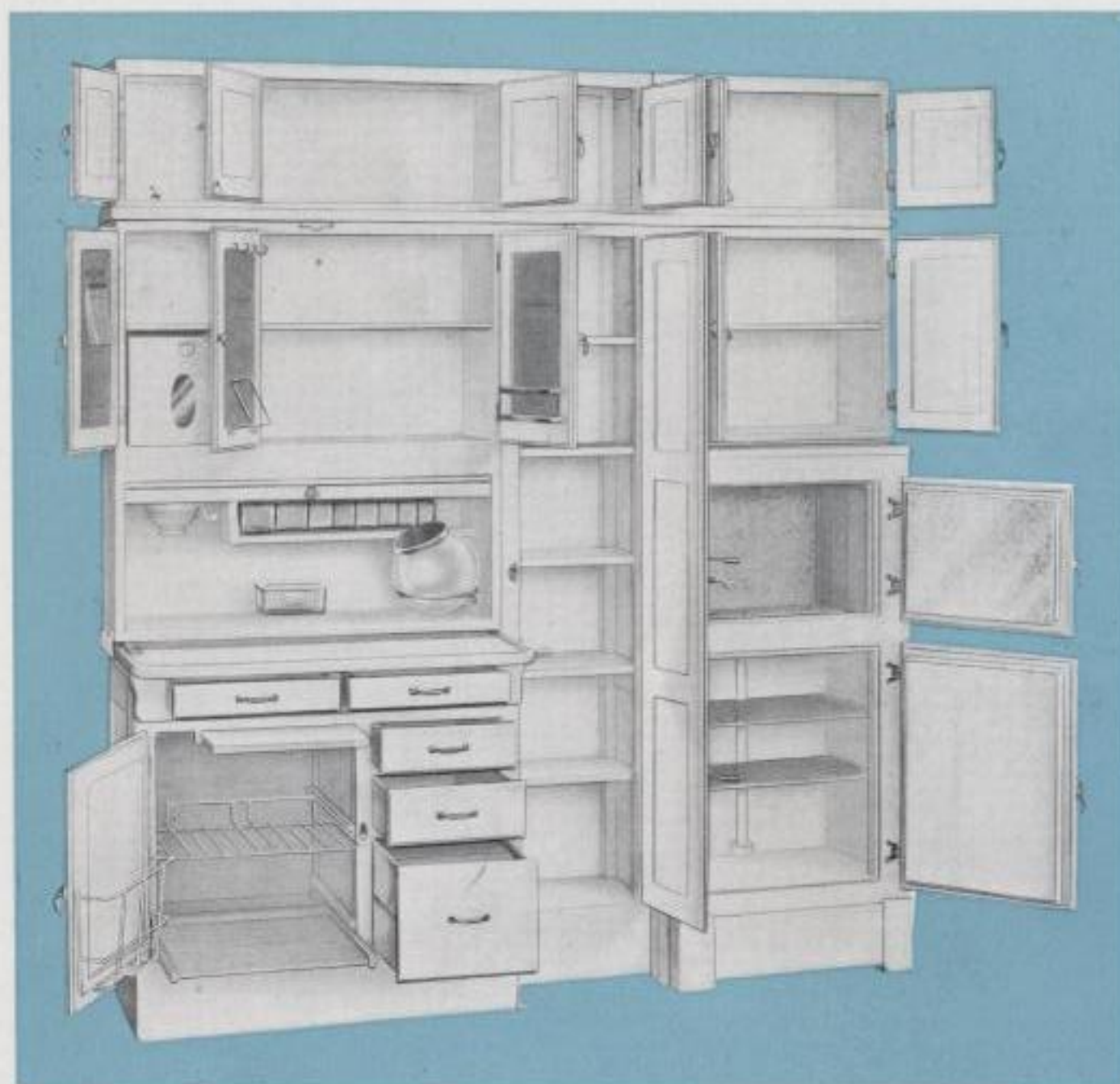


Cabinet LX with built-in breakfast table, Dish Cupboard DX, Broom Closet BX, Top Cupboard No. 1470.

Width	70 inches
Height	85 1/2 inches
Depth Cabinet Base	21 3/4 inches
Depth of Porcelain Top	25 3/4 to 34 1/2 inches
Depth of Cabinet Top, Side Units and Top Cupboard	12 inches
Using Cabinet WX, width	54 inches
Substitute No. 1454 Top Cupboard for No. 1470	
Using Cabinet TX, width	66 inches
Substitute No. 1466 Top Cupboard for No. 1470	
Using Cabinet KX, width	70 inches
Use Top Cupboard No. 1470	
Using Cabinet PX, width	78 inches
Substitute No. 1478 Top Cupboard for No. 1470	

All units finished in either white or grey enamel or one coat of flat undercoat.

Better Kitchen Equipment for Better Kitchens



Cabinet TX, Dish Cupboard DX, Refrigerator RX, Top Cupboards FR and No. 1451.

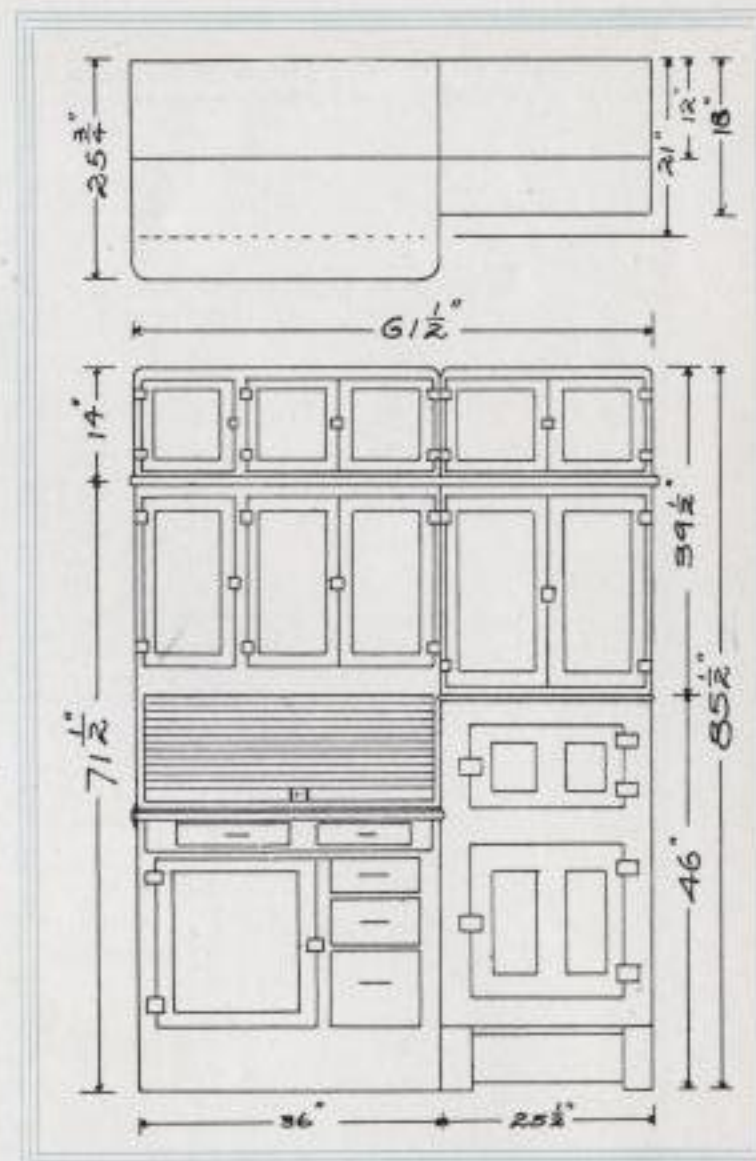
Width 76 1/2 inches
 Height 85 1/2 inches
 Depth Cabinet Base 21 inches
 Depth of Refrigerator Base 18 inches
 Depth of Porcelain Top . 25 3/4 to 34 1/2 inches
 Depth Cabinet Top, Side Unit and
 Top Cupboards 12 inches
 Using Cabinet WX, width 64 1/2 inches
 Substitute No. 1439 Top Cupboard for No. 1451
 Using Cabinets KX and LX, width, 80 1/2 inches
 Substitute No. 1455 Top Cupboard for No. 1451
 Using Cabinet PX, width 88 1/2 inches
 Substitute No. 1463 Top Cupboard for No. 1451

All units finished in either white or grey enamel or one coat of flat undercoat.

A COMBINATION composed of Cabinet TX, Dish Cupboard DX, Refrigerator RX, and Top Cupboards FR and No. 1451. In each of these pieces will be found such famous Napanee features as All Hardwood Construction, Rust-proof Hardware, Gained-in Corner Joints and all panels of Three-ply Hardwood Veneer. Using various cabinets, this combination will fit any wall space from 64 1/2 inches up to 88 1/2 inches.



THIS combination, made up of Cabinet TX, Refrigerator RX, and Top Cupboards FR and No. 1436, furnishes an abundance of storage room where the wall space is limited. Cabinet and Top Cupboards are of standard Napanee Construction and quality. All shelves and corner joints are gained-in. The under-braced porcelain top is buckle-proof. Finished in triple-coated enamel inside and out.



Cabinet TX, Refrigerator RX, Top Cupboards FR and No. 1436.

Width 61 1/2 inches
Height 85 1/2 inches
Depth of Cabinet Base 21 inches
Depth of Refrigerator Base 18 inches
Depth of Porcelain Top 25 3/4 to 34 1/2 inches
Depth of Cabinet Top and Top

Cupboards 12 inches
Using Cabinet WX, width 49 1/2 inches
Substitute No. 1424 Top Cupboard for No. 1436
Using Cabinets KX and LX, width, 65 1/2 inches
Substitute No. 1440 Top Cupboard for No. 1436
Using Cabinet PX, width 73 1/2 inches
Substitute No. 1448 Top Cupboard for No. 1436

All units finished in either white or grey enamel or one coat of flat undercoat.

Better Kitchen Equipment for Better Kitchens

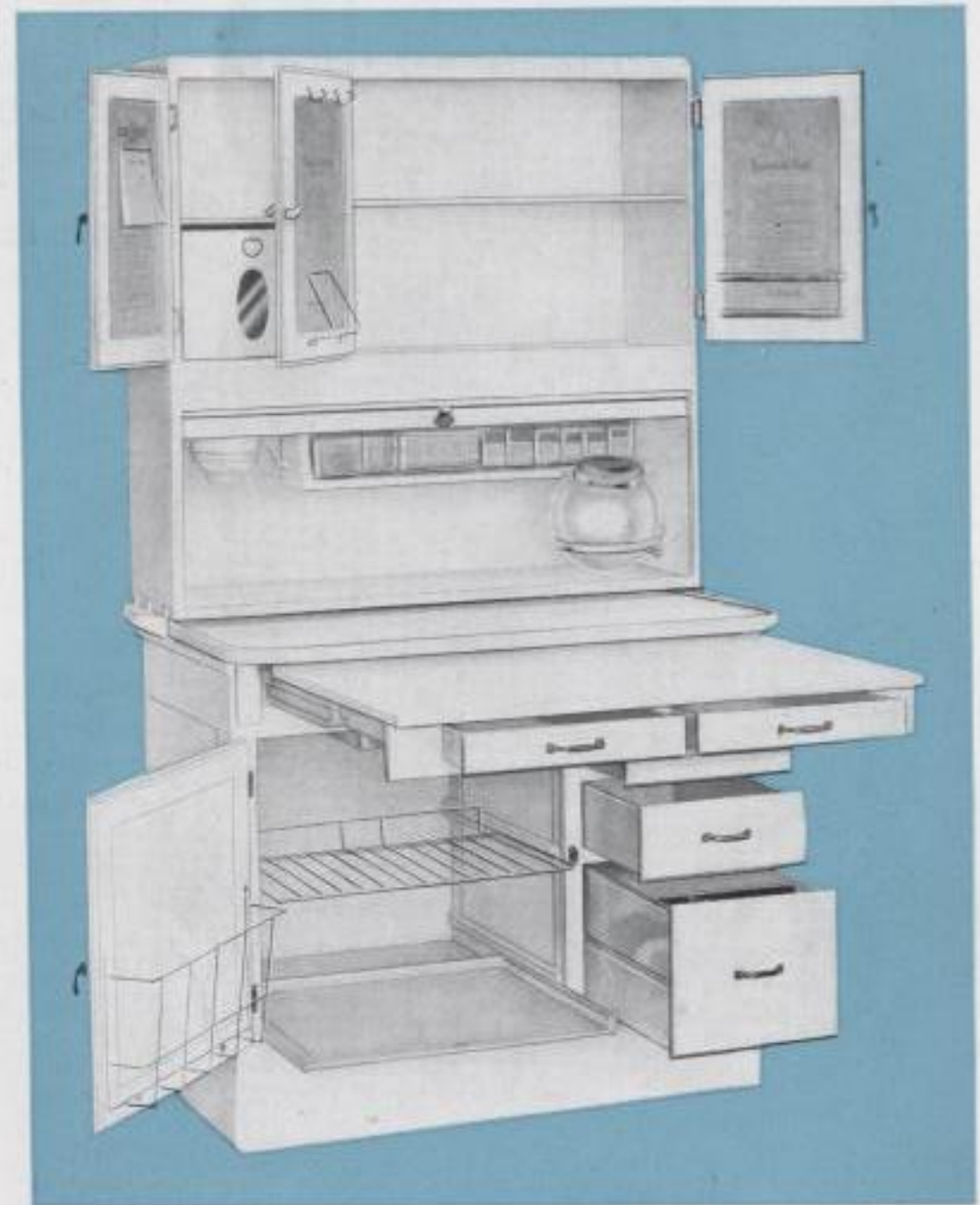
The Latest Thing in Kitchen Cabinets— Found Only in Napanee

IN equipping our kitchen cabinets with a built-in breakfast table we believe we have developed the most outstanding improvement produced in kitchen cabinets for many years. This feature is practical from all standpoints and is extremely valuable in the small kitchen where space is at a premium.

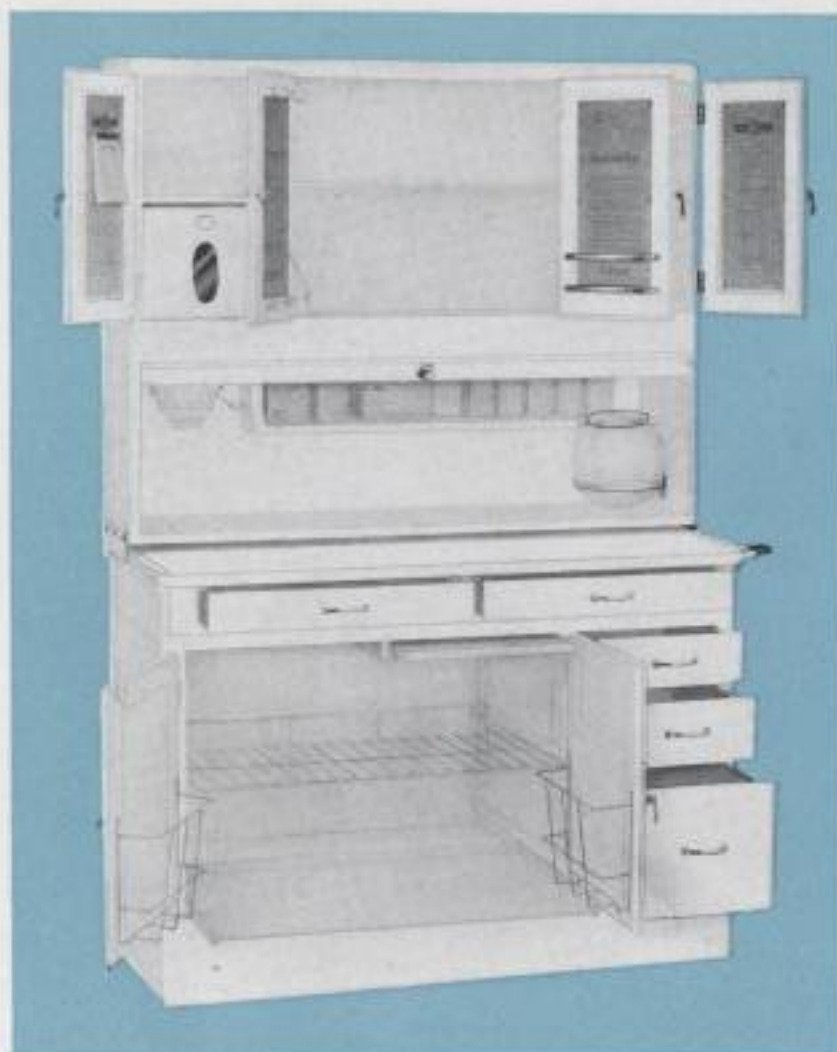
Women instantly appreciate the value of this added space in preparing for parties and large dinners. When used on our large Model PX the breakfast table provides ample space for four persons. This table is patented and will not be found on any other kitchen cabinet.

The breakfast table extends on heavy table sides and is strong and rigid. It is made of $\frac{5}{8}$ -inch hardwood lumber and when open it extends 24 inches beyond the edge of the porcelain top. When closed, the porcelain top extends as in all regular kitchen cabinets. This built-in breakfast table may be had on cabinets PX, LX, and TX.

The dimensions of the Model LX shown in the illustration are the same as given on page 8. The addition of the breakfast table does not change the dimensions of the cabinet. On a 40-inch cabinet the size of the breakfast table is 24 x 35 inches.



LX with Breakfast Table



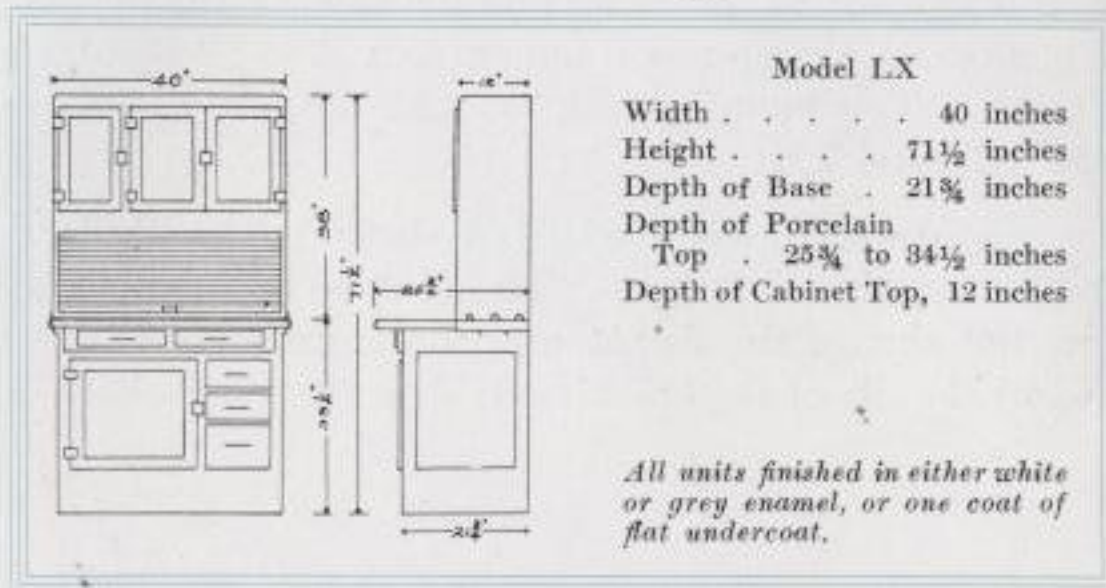
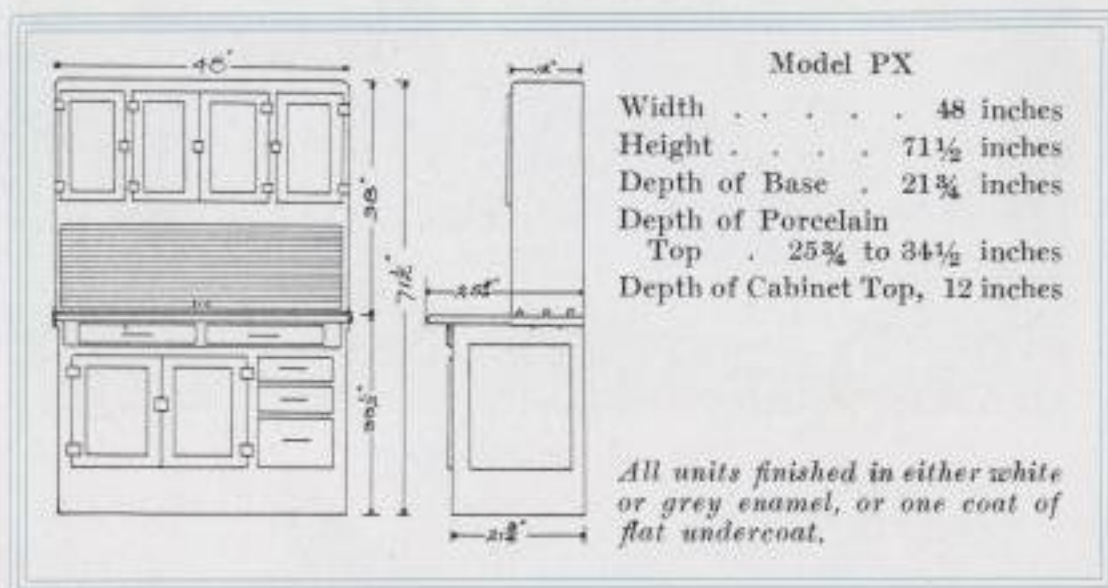
PX

NAPANEE cabinets have always been recognized as leaders in quality, construction and conveniences. Study carefully the ten Unseen Service Factors described on page fourteen. No other kitchen cabinet has all of these superior features.

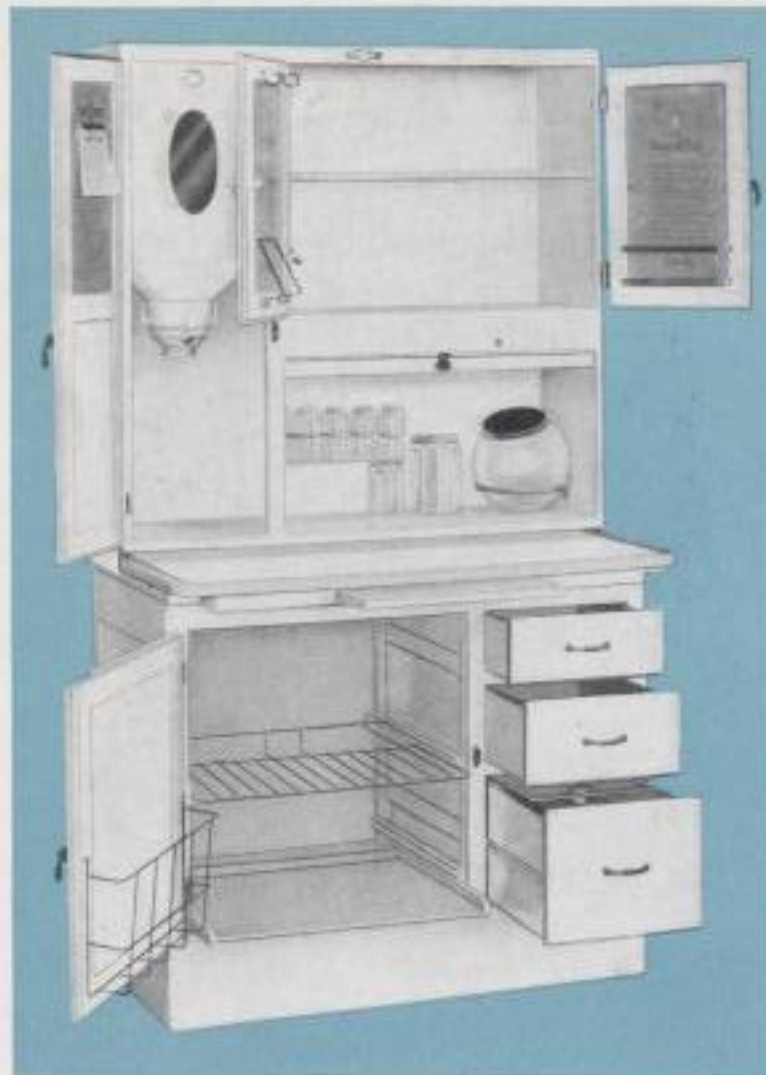
A kitchen cabinet is a necessity in the modern home, and built-in cupboards should in no way be compared with scientific kitchen cabinets. A few exclusive Napanee features are: patented easy-fill flour bin; one-piece, three-ply, hardwood veneer backs; full boxed-in drawers; triple-coated enamel inside and out; gained-in shelves and corner joints; and hardwood construction throughout. In



LX



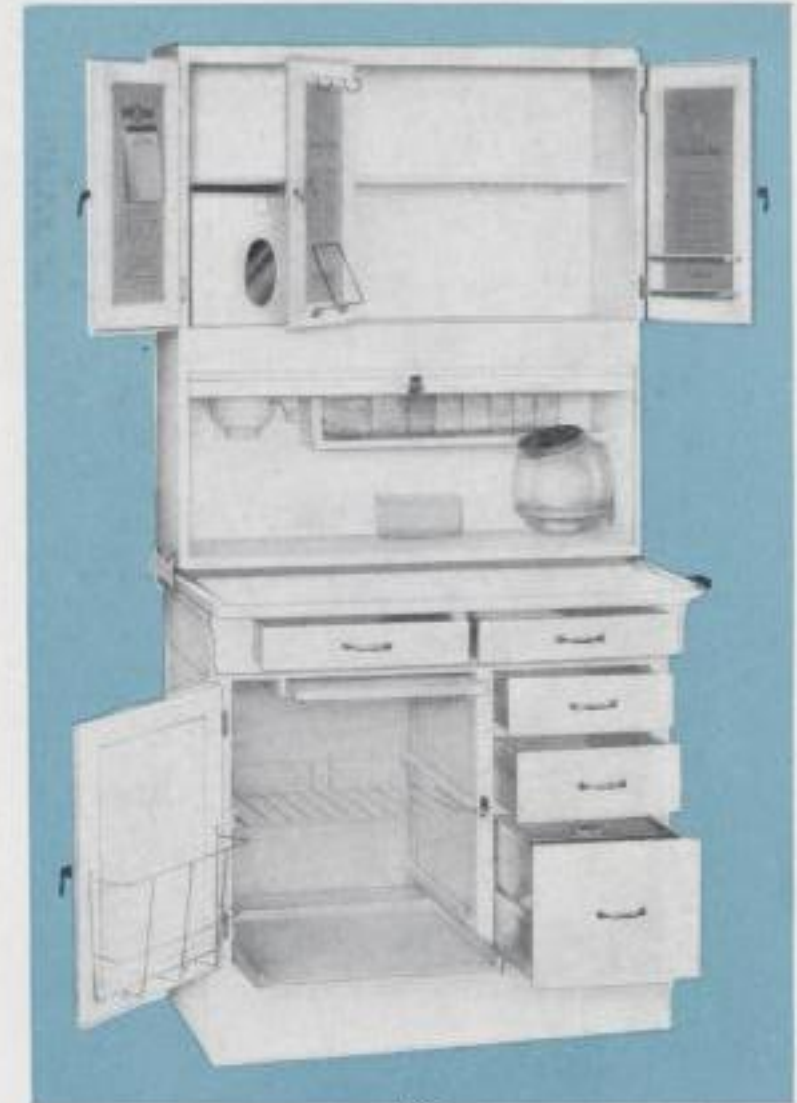
Better Kitchen Equipment for Better Kitchens



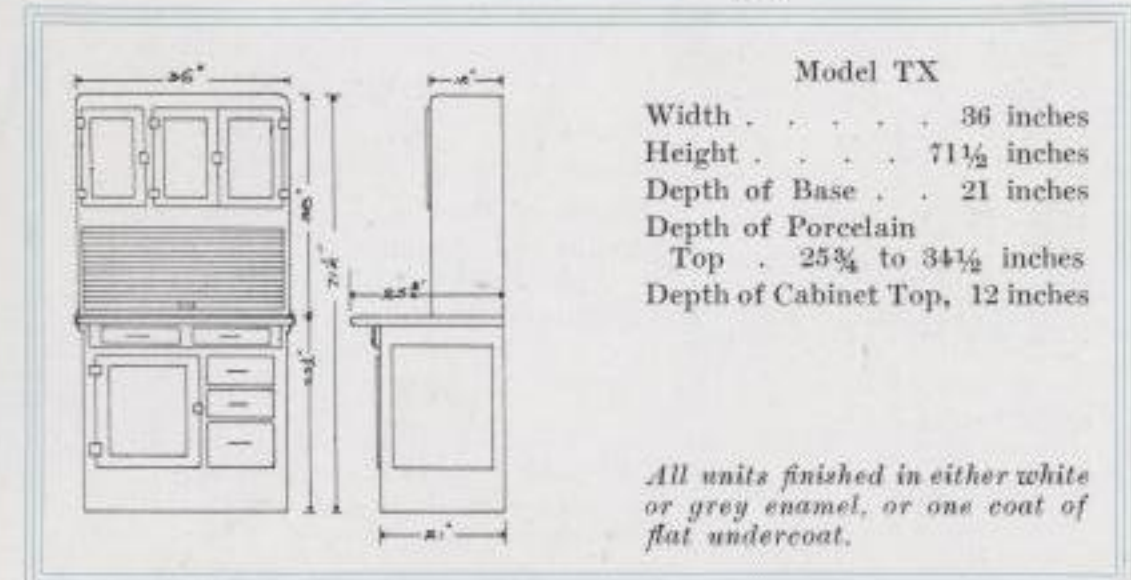
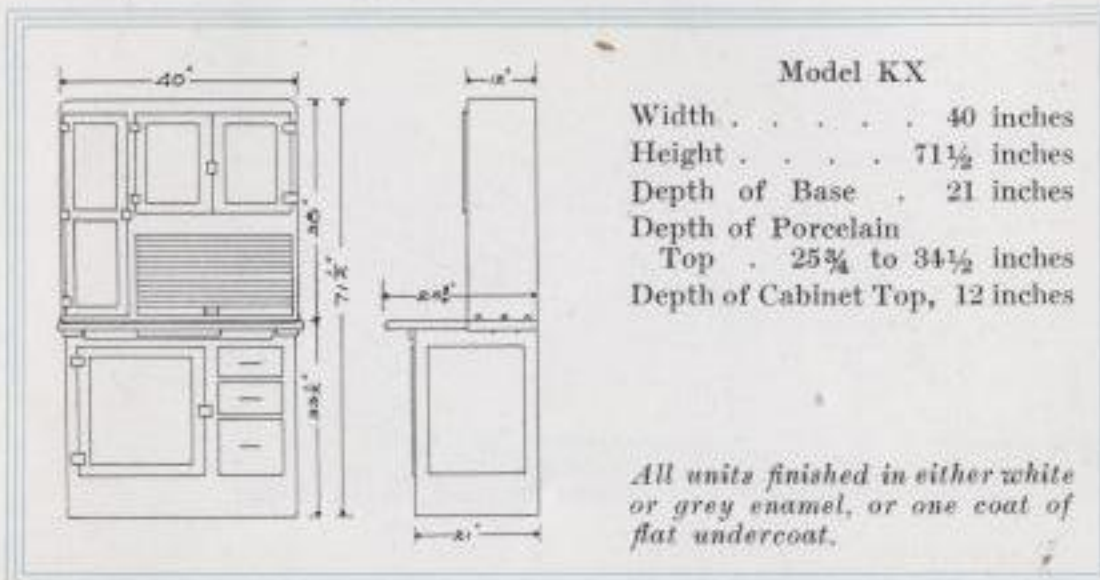
KX

addition such conveniences as cutlery drawers extending with porcelain top; sliding tray in base; buckle-proof porcelain top, and drawers which cannot bind, make the Napanee a leader.

All cabinets are finished in the best grade of enamel obtainable and are carefully inspected before leaving the factory. Notice the complete range of sizes—starting with Model WX, 24 inches wide; Model TX, 36 inches wide; Models KX and LX, 40 inches wide, and Model PX, 48 inches wide. A size to meet all conditions. Each cabinet comes equipped as shown and you will notice that all of them, including the smallest, are complete in conveniences.



TX



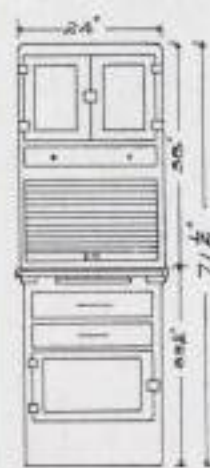


Napane Space Adjusters

VERY often it happens that the space available cannot be exactly filled with the combination desired. Variations of this kind can be easily taken care of with fill-in strips as shown in the illustration below. This makes it possible to fit any size space with standard Napane units.



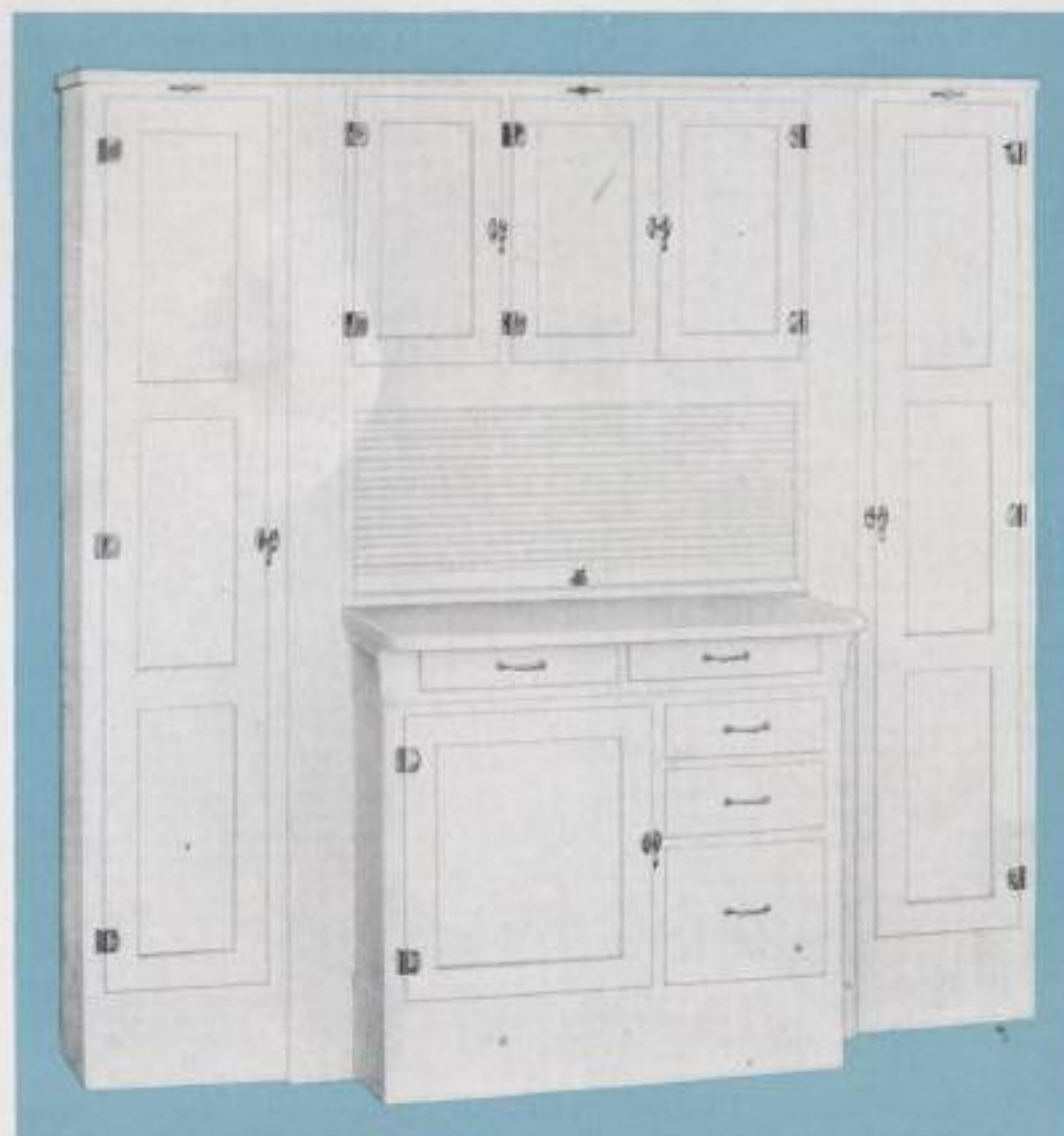
WX



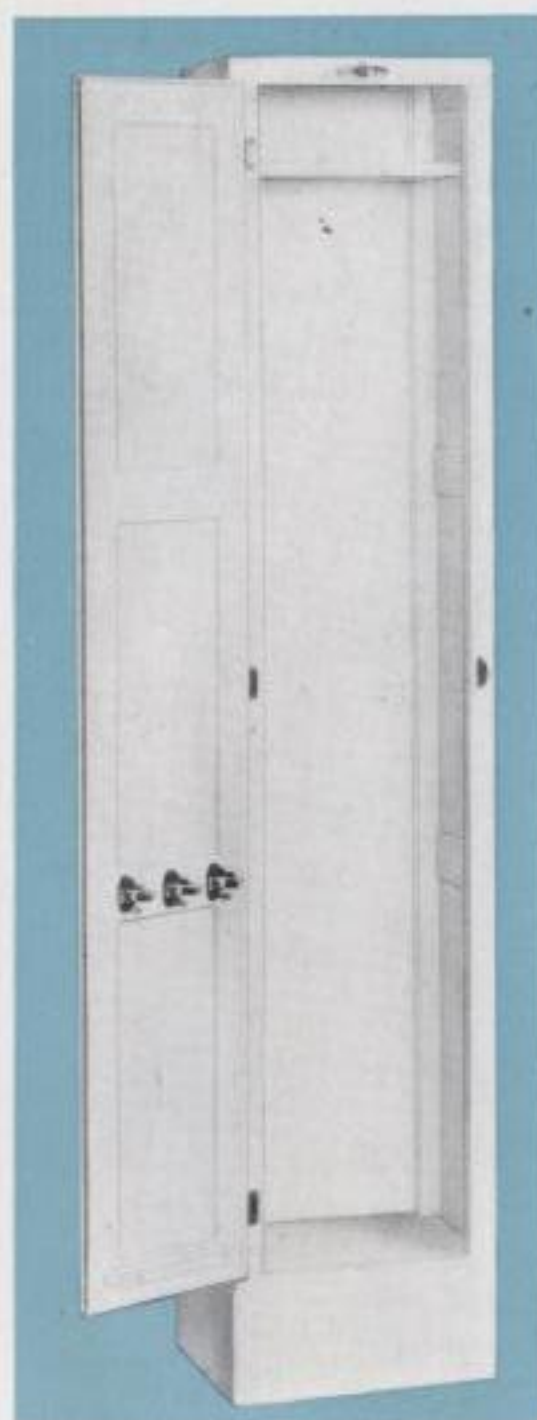
Model WX

Width 24 inches
 Height 71½ inches
 Depth of Base . . . 19 inches
 Depth of Porcelain
 Top . . . 21½ to 30½ inches
 Depth of Cabinet Top, 12 inches

All units finished in either white or grey enamel, or one coat of flat undercoat.



Better Kitchen Equipment for Better Kitchens



BX



DX



Model BX Broom Closet
Model DX Dish Cupboard

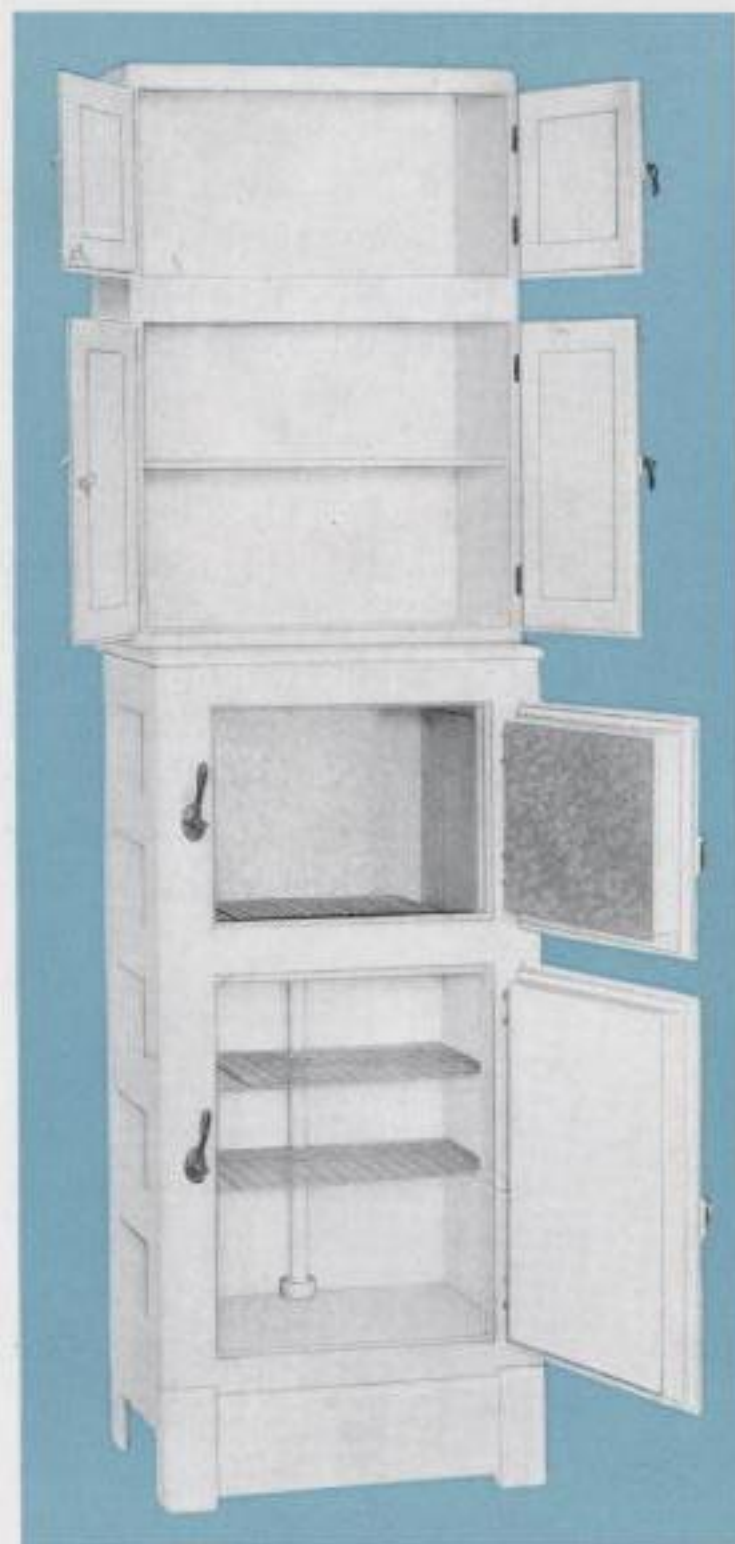
Width . . . 15 inches
Depth . . . 12 inches
Height . . . 71½ inches

All units finished in either white or grey enamel, or one coat of flat undercoat.

MODEL BX Broom Closet is designed to match the cabinets and is of standard Napanee Construction. It comes equipped with one shelf and a complete set of hooks and broom-holders.

MODEL DX Dish Cupboard is identical with Model BX in size and construction, but is equipped with five removable shelves. Both Models BX and DX can be had with the door opening from either the right or left side.

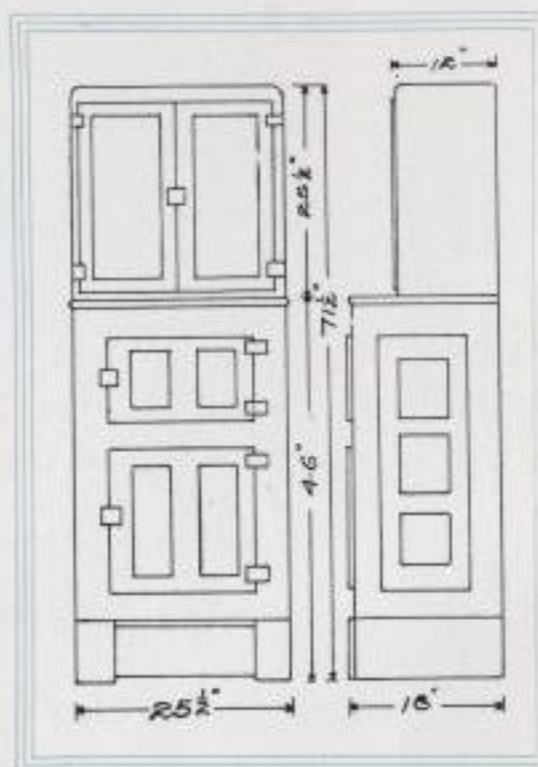
MODEL BX will usually be used for storing vacuum cleaner, brooms, mops and other cleaning utensils. Model DX provides plenty of space for dishes and food products.



RX-FR

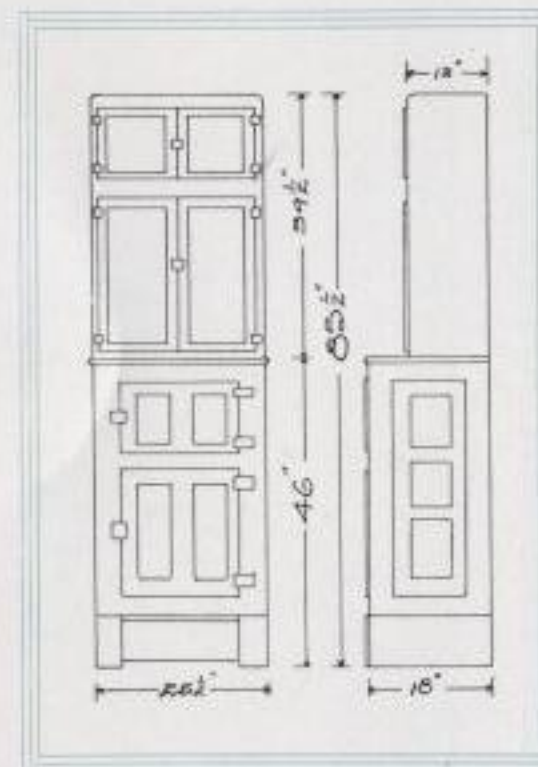
THE refrigerator used in our combinations is made by one of the oldest and best known refrigerator manufacturers. Our experience has shown us that the size which we have adopted is the most practical for general use and that it works unusually well in combinations to meet varied space requirements. Although we show only one size, we can furnish other sizes where necessary.

Our refrigerator has an ice capacity of 100 pounds and the ice chamber is large enough to accommodate the use of any one of several well known makes of electrical refrigeration units. We furnish refrigerator Top Cupboards in three different sizes.



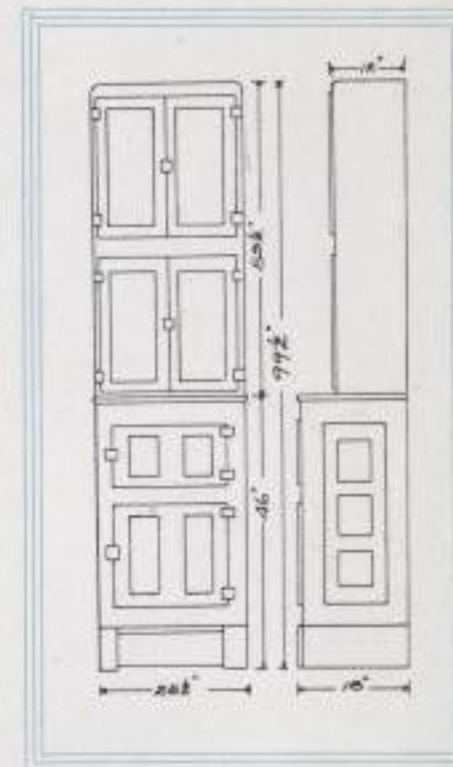
Refrigerator RX, Top Cupboard ER.

Width 25 1/2 inches
Height Refrigerator . 46 inches
Height Top Cupboard, 25 1/2 inches
Total Height . . . 71 1/2 inches
Depth Refrigerator . 18 inches
Depth Top Cupboard . 12 inches



Refrigerator RX, Top Cupboard FR.

Width 25 1/2 inches
Height Refrigerator . 46 inches
Height Top Cupboard, 39 1/2 in.
Total Height . . . 85 1/2 inches
Depth Refrigerator . 18 inches
Depth Top Cupboard, 12 inches

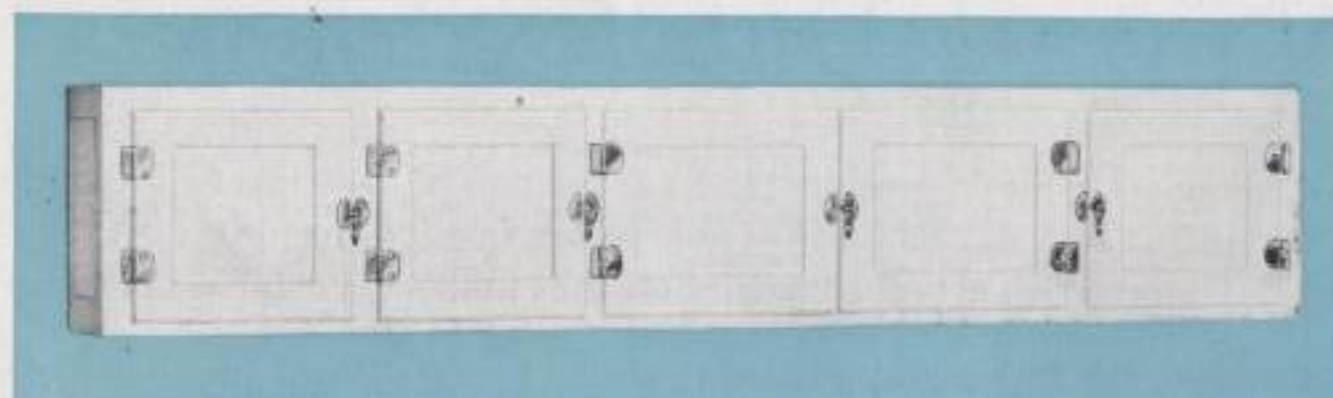


Refrigerator RX, Top Cupboard GR.

Width 25 1/2 inches
Height Refrigerator . 46 inches
Height Top Cupboard . 53 1/2 inches
Total Height . . . 99 1/2 inches
Depth Refrigerator . 18 inches
Depth Top Cupboard . 12 inches

All units finished in either white or grey enamel or one coat of flat undercoat.

Better Kitchen Equipment for Better Kitchens



1466



2866

WE manufacture Top Cupboards in two heights, 14 inches and 28 inches. In designating the various sizes, the first two numbers govern the height and the last two the length as follows: Top Cupboard No. 1466 is 14 inches high and 66 inches long. All Top Cupboards are 12 inches in depth. Below is a complete list of the various lengths and the combinations in which they are used.

No. 1415 } Used over either one of Side Units DX and BX.
No. 2815 }

No. 1424 } Used over Cabinet WX alone.
No. 2824 }

No. 1430 } Used over two Side Units.
No. 2830 }

No. 1436 } Used over Cabinet TX alone.
No. 2836 }

No. 1439 } Used over Cabinet WX with one Side Unit.
No. 2839 }

No. 1440 } Used over Cabinets LX and KX alone.
No. 2840 }

No. 1448 } Used over Cabinet PX alone.
No. 2848 }

No. 1451 } Used over Cabinet TX with one Side Unit.
No. 2851 }

No. 1454 } Used over Cabinet WX with two Side Units.
No. 2854 }

No. 1455 } Used over Cabinet LX or KX with one Side Unit.
No. 2855 }

No. 1463 } Used over Cabinet PX and one Side Unit.
No. 2863 }

No. 1466 } Used over Cabinet TX with two Side Units.
No. 2866 }

No. 1470 } Used over Cabinet LX or KX with two Side Units.
No. 2870 }

No. 1478 } Used over Cabinet PX with two Side Units.
No. 2878 }

- 1 One-piece Laminated Back of three-ply hardwood veneer. Dust-proof and mouse-proof.
- 2 Gained-in shelf construction. All shelves are gained-in, nailed and glued.
- 3 Gained-in corner joints. They are also set in hot glue and nailed.
- 4 All Hardwood Construction. Only the best grade of kiln-dried, hardwood lumber used.
- 5 Triple-Coated Enamel Inside and Outside. Best grade obtainable. Will not check or peel.
- 6 Base reinforced front and rear. Always stays rigid. No wobbly legs, no loose joints.
- 7 Fill-in strip in back between cupboard and base. This makes a solid back from top to bottom.
- 8 Under-braced, buckle-proof porcelain top. Top is tightly stretched and stays Firm-flat.
- 9 Full boxed-in drawers. All partitions are gained into place. Drawers cannot come apart.
- 10 Rust-proof Hardware. Nickel-plating over brass, treated with Udyllite process makes hardware non-rusting.

Unseen Service Factors of Napanee Dutch Kitchenets

WHAT makes a kitchen cabinet? Is it the equipment, the features and conveniences of the cabinet? Or is it the quality that goes into it — the materials and methods of construction that make the cabinet stand up?

We believe it is the latter and a careful study of the Ten Unseen Service Factors described at the left will convince you that Napanee Dutch Kitchenets are truly "Built Like Fine Furniture." All of these features of construction are necessary in high-grade cabinet work and several of them are to be found only in the Napanee.

It is because of the unusually high grade of materials and the careful construction that Napanee Cabinets serve their owners year after year without developing those faults so common in kitchen cabinets, such as: doors that warp and sag; drawers that bind, and come apart; loose joints; backs that shrink and crack; and rusty hardware.

Napanee Side Units and Top Cupboards are made of the same quality materials and have the same construction features found in Napanee Dutch Kitchenets. They, too, will give years of satisfactory service.

In addition to the superior quality and construction of Napanee merchandise, Napanee cabinets also possess all the necessary conveniences of the modern kitchen cabinet, and we are confident that after you have inspected our merchandise you will agree with us that the Napanee Line is the leading line of modern kitchen equipment.

Better Kitchen Equipment for Better Kitchens

Dimension Sheet—Napanee Special Unit System

WITHOUT REFRIGERATOR				INCLUDING REFRIGERATOR					
Width	Cabinet	Side Unit	Top Cupboard Number	Width	Refrigerator	Cabinet	Side Unit	Refrigerator Top	Top Cupboard Number
15 in.		DX or BX	1415 or 2815	25½ in.	RX			FR	
24 in.	WX		1424 or 2824	40½ in.	RX		DX or BX	FR	1415 or 2815
30 in.		Any two—DX or BX	1430 or 2830	49½ in.	RX	WX		FR	1424 or 2824
36 in.	TX		1436 or 2836	55½ in.	RX		Any two—DX or BX	FR	1430 or 2830
39 in.	WX	DX or BX	1439 or 2839	61½ in.	RX	TX		FR	1436 or 2836
40 in.	LX or KX		1440 or 2840	64½ in.	RX	WX	DX or BX	FR	1439 or 2839
48 in.	PX		1448 or 2848	65½ in.	RX	LX or KX		FR	1440 or 2840
51 in.	TX	DX or BX	1451 or 2851	73½ in.	RX	PX		FR	1448 or 2848
54 in.	WX	Any two—DX or BX	1454 or 2854	76½ in.	RX	TX	DX or BX	FR	1451 or 2851
55 in.	LX or KX	DX or BX	1455 or 2855	79½ in.	RX	WX	Any two—DX or BX	FR	1454 or 2854
63 in.	PX	DX or BX	1463 or 2863	80½ in.	RX	LX or KX	DX or BX	FR	1455 or 2855
66 in.	TX	Any two—DX or BX	1466 or 2866	88½ in.	RX	PX	DX or BX	FR	1463 or 2863
70 in.	LX or KX	Any two—DX or BX	1470 or 2870	91½ in.	RX	TX	Any two—DX or BX	FR	1466 or 2866
78 in.	PX	Any two—DX or BX	1478 or 2878	95½ in.	RX	LX or KX	Any two—DX or BX	FR	1470 or 2870
				103½ in.	RX	PX	Any two—DX or BX	FR	1478 or 2878

When the combination desired does not exactly fill the available space this can be easily adjusted with the fill-in strips described on page ten. When complete units are ordered all necessary fill-in strips are included.

In designating Top Cupboards the first two numbers are the height and the last two are the length, as: No. 1466 is a Cupboard 14 inches high and 66 inches long. All Top Cupboards are 12 inches deep.

All Cabinet heights 71½ inches. Using 14-inch Cupboard, total height 85½ inches. Using 28-inch Top Cupboard, total height 99½ inches.

In schedule including refrigerator, the refrigerator Top Cupboard FR makes the height 85½ inches. For Cabinet height use Top Cupboard ER. For 99½-inch height, use Top Cupboard GR.