

2 0 0 1

# Endeavor<sup>®</sup>

## D I E S E L

MORE OF EVERYTHING A DIESEL SHOULD BE.





Rosewood



Nordic Blue



Toffee



Silver Pine

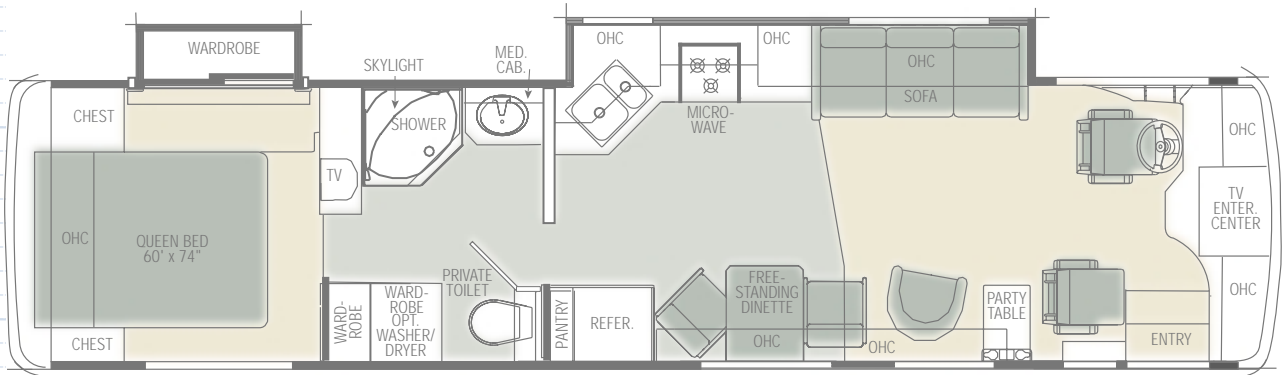


Martha Stewart  
fabrics

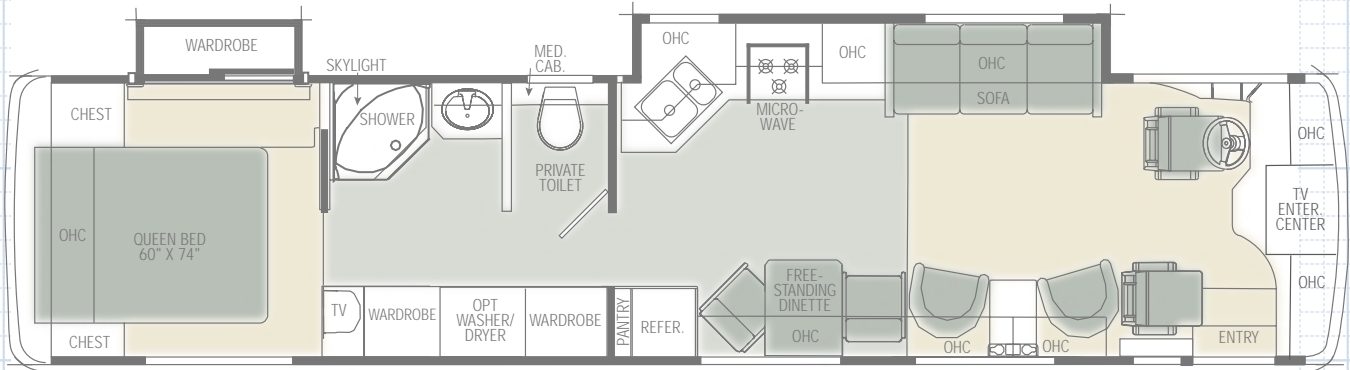


ABOVE — The beautiful interiors of Endeavor Diesel are made even more splendid with elegant fabrics from Martha Stewart. (Shown: 38CDS.)

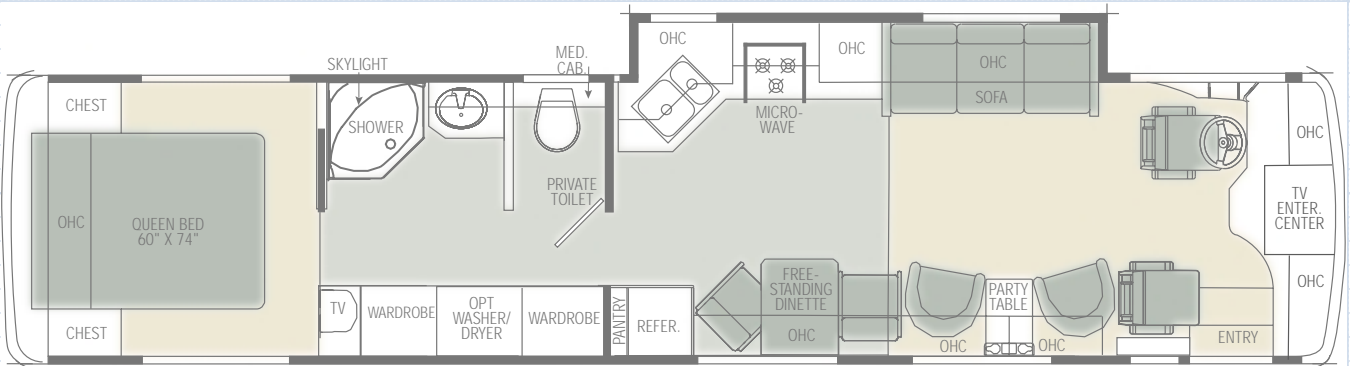
Carpet Tile



36PWD

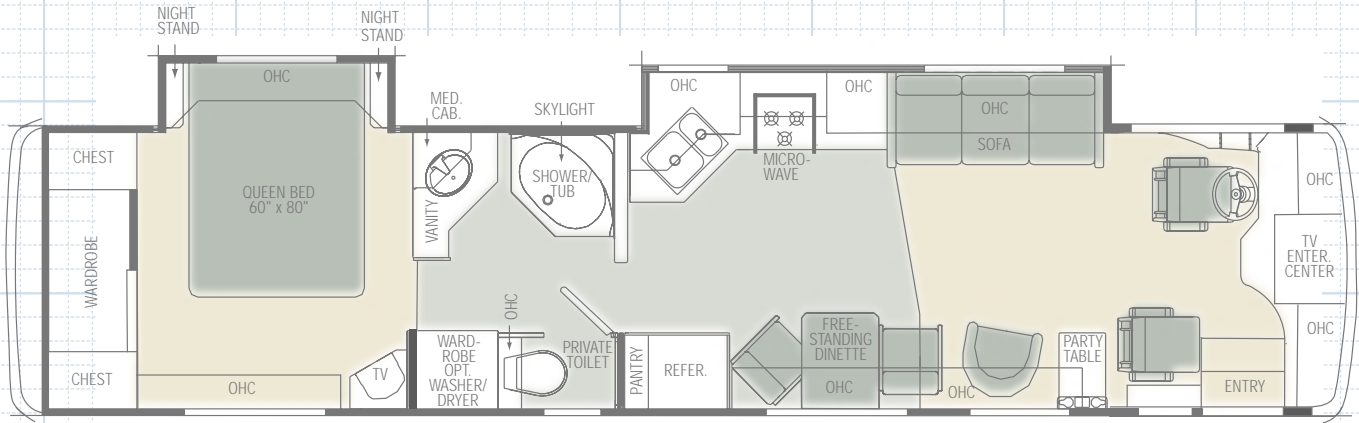


38CDD

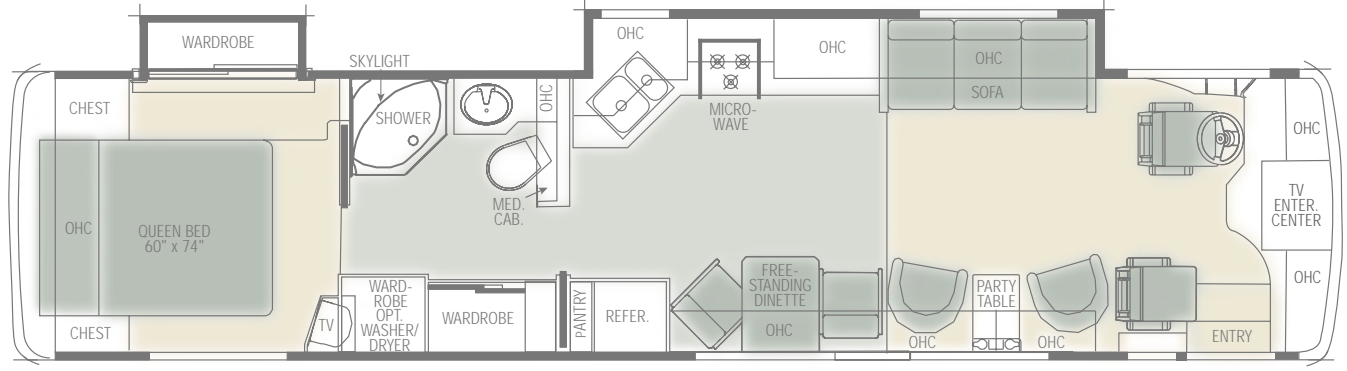


38CDS

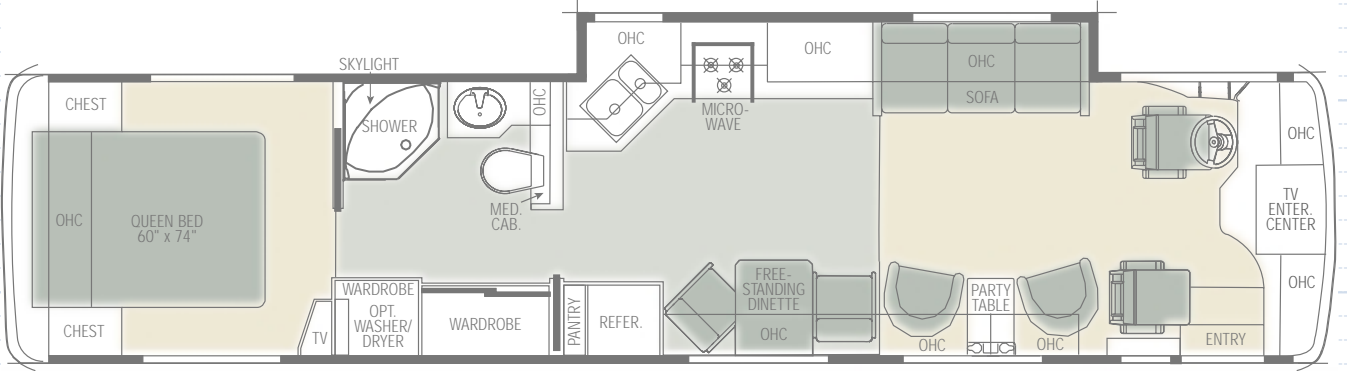
# FLOOR PLANS



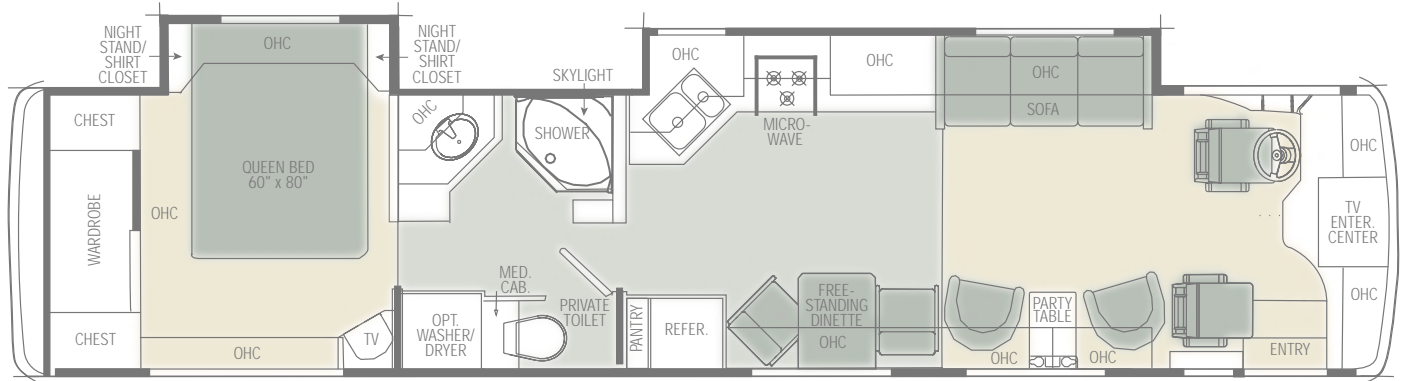
38PBD



38WDD



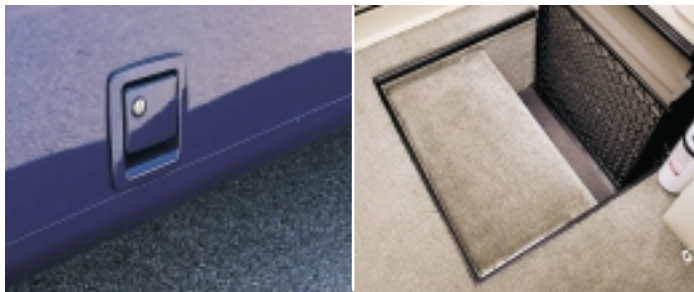
38WDS



**BODY CONSTRUCTION**

**Standard Features**

- Alumaframe® Superstructure with Limited Five-Year Warranty
- Steel Cage Cockpit Construction
- Peaked Aluminum Roof with Fiberglass Insulation
- Smooth Gel Coat Fiberglass Exterior Walls
- Front and Rear Molded Fiberglass Caps
- Integrated Fiberglass Front and Rear Bumpers
- Soft Touch Padded Vinyl Ceiling
- Interior Paneling with 3/4-inch Bead Foam Insulation
- Underbelly with Block Foam Insulation
- Exterior Entry Assist Handle
- Retractable Underhood Utility Light
- Steel Framed Floor on Steel Trusses
- 5/8-inch Structurewood Flooring, Laminated Floor
- Wardrobe Slide-Out (36PWD, 38CDD, 38WDD)
- Mud Flaps
- Exterior Polyethylene Storage Compartments
- Baggage Doors with Integrated Single Handle Latches**



- Rear Ladder
- Undercoating

**Options**

- Vinyl Front Cap Protective Mask
- Full Pass-Through Slide-Out Storage Tray Compartment
- Full Length Mud Flaps
- 3M Front Film Mask

**COCKPIT**

**Standard Features**

- CD Player/Radio with Four Speakers
- Intermittent Windshield Wipers
- Burlwood Instrument Panel
- Pilot and Co-Pilot Map Lights

**COCKPIT (cont.)**

**Standard Features**

- Screened Doors in Front Overhead Cabinets
- Fog Lights
- Power Steering
- Audible Turn Signals
- Vinyl Pilot and Co-Pilot Seats with 6-Way Power Pilot Seat
- Electronic Cruise Control
- Powered Step Well Cover (Air)**
- 12V and 110V Outlet in Cockpit
- Tilt and Telescopic VIP 18-inch Steering Wheel
- Adjustable Brake and Accelerator Pedals
- Air Horn
- CB Prep with Antenna

**Rear Vision Camera**

- Color Coordinated Carpeted Floor Mats

**Power Controlled Heated Exterior Mirrors**

**Options**

- Leather-Faced Pilot and Co-Pilot Seats
- Six-Way Power Co-Pilot Seat
- Extra Wide Co-Pilot Seat with Power Footrest
- Stereo Upgrade Package (Speakers, amp and Sub Woofer)
- Power Sunvisors
- AM/FM Cassette (Deletes CD)
- 10 Disc CD Changer

**APPLIANCES AND ACCESSORIES**

**Standard Features**

- Large Double-Door Refrigerator
- 17-inch High Output Three-Burner Range/Oven
- Flush Mounted Bi-Fold Range Cover

**Space Saver Convection**

**Microwave with Touch Control and Range Hood**



**APPLIANCES AND ACCESSORIES (cont.)**

**Standard Features**

- Systems Monitor Panel
- TV Antenna and Booster
- 20-inch Stereo Color TV with Remote Control (Front Centered)
- 13-inch Color TV with Remote Control (Bedroom)
- Stereo VCR with Video Switching Box
- Cable TV Hook-up and Telephone Jacks

**Options**

**Four-Door Refrigerator with Ice Maker and Raised Panel Doors**

- Large Double-Door Refrigerator with Ice Maker and Raised Panel Doors
- Washer/Dryer Prep
- Combination Washer/Dryer (Requires Washer/Dryer Prep)
- Digital Satellite System (Fully Automatic)
- Digital Satellite System (Pre-Wire)
- High-Output Three-Burner Cooktop with Drawer (No Oven)

**INTERIOR**

**Standard Features**

- Western Oak Cabinets
- Flip-Up Hardwood Party Table
- Solid Wood Square Raised Panel Cabinet Doors
- Solid Surface Kitchen Countertop with Stainless Steel Sink
- Cultured Marble Bathroom Countertop with Integrated Sink
- Low Friction Roller Drawer Guides
- Full Length Dressing Mirror
- Bathroom Mirror
- Towel Bars in Bathroom
- Queen Bed Head-To-Side (38PBD, 40PBD)
- Queen Bed Head-To-Rear (N/A: 38PBD, 40PBD)
- Queen Bedspread with Pillows
- Easy-Bed Sofa with Drawer



**INTERIOR (cont.)**

**Standard Features**

- Fixed Dinette Table with Two Chairs
- Two Folding Wood Dinette Chairs
- Fabric Swivel Barrel Chair (Two in 38CDD, 38CDS, 38WDD, 38WDS, 40PBD)
- Day/Night Shades in Living Area and Bedroom
- Mini Blinds in Bathroom and Kitchen

**Ceramic Tile in Kitchen and Bathroom**

Nylon Carpeting and Pad in Bedroom and Living Area

**Options**

- Leather-Faced Free-Standing Recliner
- Fabric Recliner
- Regal Cherry or Walnut Cabinets
- Open/Closed Bath (38PBD, 40PBD)
- Computer Table (Requires Recliner) (N/A: 34WDS, 36PWD, 38PBD)
- Curbside Leather-Faced J-Lounge with Drawer (N/A: 34WDS, 36PWD, 38PBD)
- Curbside Leather-Faced Love Seat (N/A: 34WDS, 36PWD, 38PBD)
- Leather-Faced Magic Bed Sofa (Driver's Side)
- Fabric Magic Bed Sofa (Driver's Side)
- Leather-Faced Sofa Bed (Easy-Bed) with Drawer on Drivers Side
- Booth Dinette
- Martha Stewart Decor



**ELECTRICAL SYSTEMS AND LIGHTS**

**Standard Features**

- 55 amp 12V Power Converter (Electronic)
- 50 amp 120V Distribution Panel and Cord
- Onan® 6.5 KW LP Generator
- Two 6V Deep Cycle Batteries

**Recessed Side Docking Lights**



**ELECTRICAL SYSTEMS AND LIGHTS (cont.)**

**Standard Features**

- Battery Disconnect Switches
- Porch Light
- Patio Receptacle
- Entry Step Light
- Bath Water Pump Switch
- Two Three-Way Switches (One at Entry and One at Bedroom)
- Decorative Dining Light
- Cosmetic Light in Bathroom
- Decorative Lights in Living Area and Bedroom
- Fluorescent Lights in Ceiling

**Options**

- Energy Management System
- 60 Watt Solar Panel
- Onan® 7.5 KW QD Diesel Generator
- 1,500 W Inverter with Two Additional 6V Batteries

**HEATING, VENTS AND AIR CONDITIONING**

**Standard Features**

- Two 13.5M BTU Ducted Low Profile Roof Air Conditioners with Ceiling Ducting with Heat Pump
- Dash Heating and Air Conditioner System with Defroster
- 40M BTU Electronic Ignition Furnace (35 BTU on 34-foot and 36-foot)
- Wet Bay with 12V Heater
- Ducted In-Floor Heating System
- Attic Fan in Kitchen
- 12V Roof Vent in Bathroom

**Options**

- Cold Weather Package
- 12V Attic Fan in Bathroom

**PLUMBING AND LP SYSTEMS**

**Standard Features**

- Water Purifier in Kitchen
- Bath Fixtures
- 10 Gallon LP Gas/Electric Water Heater (DSI)
- Water Pump Switch in Service Area
- Water Heater By-Pass Valve
- Gravity or Pressurized Water Fill
- One-Piece Fiberglass Shower
- Demand Water System and Water Pump

**PLUMBING AND LP SYSTEMS (cont.)**

**Standard Features**

- Glass Shower Door with Brass Frame
- Decorative Kitchen and Bathroom Faucets
- China Toilet
- Insulated Systems Compartment with Easy Access to Hook-Ups
- No-Fuss Flush Holding Tank Rinsing System

**Options**

- Neo Angled Bath Tub (N/A: 38WDS, 38WDD)
- Garden Tub (38WDS, 38WDD)



**WINDOWS, DOORS AND AWNINGS**

**Standard Features**

- Slider Dual Pane Windows
- New Radius Front Entrance Door with Clear Glass, Screen Door and Anti-Skid Steps
- Tinted Skylight in Bathroom
- Slide-Out Awning

**Front Door Awning**

- Color Coordinated Acrylic Patio Awning with Metal Cover

**Options**

- Carefree® Automatic Patio Awning
- Window Awning(s) (Only one Available on Double Slide-Outs)

**SAFETY**

**Standard Features**

- Fire Extinguisher
- Deadbolt Lock on Entrance Door
- 120V GFI Protected Circuit (Kitchen, Bathroom, Exterior)
- LP Gas Detector
- Smoke Detector
- Carbon Monoxide Detector
- Driver and Passenger Three-Point Seat Belts (Lap and Shoulder)
- Third Brake Safety Light
- Egress Window(s)



# 2001 Endeavor® Diesel SPECIFICATIONS

## CHASSIS/ENGINE/SUSPENSION

### Standard Features

Raised Rail Roadmaster Chassis
Cummins® 330 HP ISC Engine with Fuel Injection and Charged Air
Allison® 3000 MH Transmission
Torque (Lbs.-Ft. Max. Net at 1,400 RPM): 950
Cubic Inch Displacement: 504.5/8.3L
Fuel Tank Capacity with Single Fill: 100 Gal.
Alternator: 160 amps
Rear Axle Ratio: 4.30:1
Full Air Suspension
Gas Shocks

Sheppard M80PBV11 Power Steering Box
Stainless Steel Wheel Liners
Radial Tires
Tire Size: 255/70RX22.5
Tire Load Range: H
Full Air Brakes (Drums) with Automatic Slack Adjusters
Pac Brake
Engine Block Heater
Air Cleaner Restriction Indicator
10,000 Lb. Hitch Receiver and Six-Point Connector
<b>Options</b>
Manual Hydraulic Leveling Jacks (4 PT.)
Aluminum Wheels

WEIGHTS*	36PWD	38CDD	38CDS	38PBD	38WDD	38WDS	40PBD
Gross Vehicle Weight Rating (Lbs.)	30,000	30,000	30,000	30,000	30,000	30,000	30,000
Gross Combined Weight Rating (Lbs.)	40,000	40,000	40,000	40,000	40,000	40,000	40,000
Front Gross Axle Weight Rating (Lbs.)	11,000	11,000	11,000	11,000	11,000	11,000	11,000
Rear Gross Axle Weight Rating (Lbs.)	19,000	19,000	19,000	19,000	19,000	19,000	19,000

## MEASUREMENTS

Wheelbase	216"	242"	242"	242"	242"	242"	256"
Overall Length	N/A	N/A	N/A	N/A	N/A	N/A	N/A
Overall Height **	12' 0"	12' 0"	12' 0"	12' 0"	12' 0"	12' 0"	12' 0"
Interior Height	6' 6"	6' 6"	6' 6"	6' 6"	6' 6"	6' 6"	6' 6"
Interior Width	94.5"	94.5"	94.5"	94.5"	94.5"	94.5"	94.5"
Exterior Width (100.5" Floor)	100.5"	100.5"	100.5"	100.5"	100.5"	100.5"	100.5"

## TANK CAPACITIES

All Tank Capacities are Approximate. Actual \*Usable Capacity\* May Vary as a Result of Variances in Installation and Fabrication of the Tanks.

Water Heater (Gal.)	10	10	10	10	10	10	10
Gray Tank (Gal.)	60	60	60	60	60	60	60
Black Tank (Gal.)	40	40	40	40	40	40	40
Fresh Tank (Gal.)	100	100	100	100	100	100	100
LP Tank (Gal.)***	38	38	38	38	38	38	38

\*Weights May Vary by Options. \*\*Heights are Based on Static Load Equal to Gross Vehicle. \*\*\*Actual Filled LP Capacity is 80% of Listing Due to Safety Shut Off Required on Tank.

Due to the large variety of options and floor plan arrangements available to our customers, actual weights for each unit can differ significantly. Holiday Rambler provides a weight sticker on each unit we produce which includes that unit's tank capacities and approximate weight. Consult your local Holiday Rambler dealer for unit availability and further information.

The information printed in this brochure reflects product design, fabrication, and component parts at the date of printing. The manufacturer reserves the right, at any time, to make changes in product design or material or component specifications at its sole option, without notice. This includes the substitution of components of a different brand or trade name which will result in comparable performance. All information printed in this brochure is subject to change after the date of printing. Some features shown or mentioned in this brochure are optional and may only be available in

selected floor plans. Photographs may show props or decorations that are not standard equipment on Holiday Rambler models. Holiday Rambler, the HR logo and its design, are registered trademarks. All other products and company names are trademarks and/or registered trademarks of their respective holders.

While the color of the motor home's exterior and the interior fabrics depicted in this sales brochure are fair and reasonable depictions, the colors depicted may not be an exact match of the actual colors because of the variances in photo-processing and variances caused by inserting the photographs within the sales brochure. Due to product improvements, changes during the model year and/or transcription errors that may occur, information represented within this brochure may not be accurate at the time of your purchase. If certain information is significant to your purchasing decision, please confirm the information with your dealer prior to submitting your order.