

2021

2021 CLASS A GAS

INVICTA
by HOLIDAY RAMBLER

holidayrambler.com



HOLIDAY RAMBLER



#thisisliving

For our gas chassis, we take the Ford® drivetrain and create a solid platform to build on. The result is enhanced balance and control, as well as the strength to carry more weight. The design also allows for larger pass-through storage.



Truss Style Platform Chassis

The Truss Style Platform puts strength, stability, and reliability front and center. Perfect for trips requiring large carrying capacities, and built to store everything you need with spacious pass-through storage, the Truss Style Platform is the ideal chassis for optimum balance and control — Found on Holiday Rambler Invicta gas motorhomes.

Every new adventure requires a solid foundation. The Truss Style Platform is designed with balance, control, a smooth ride, and ample space in mind, all working together to give you a ride like no other RV can provide.



RV OWNERCARE

Limited one-year/15,000-mile coach warranty and three-year/45,000-mile structural warranty, whichever occurs first, and it is fully transferable for the first 12 months. RV OWNERCARE is one of the RV industry's most comprehensive programs and includes systems, appliances, components and construction, with no deductible and no service charge.

Chassis Warranty provided by Ford®

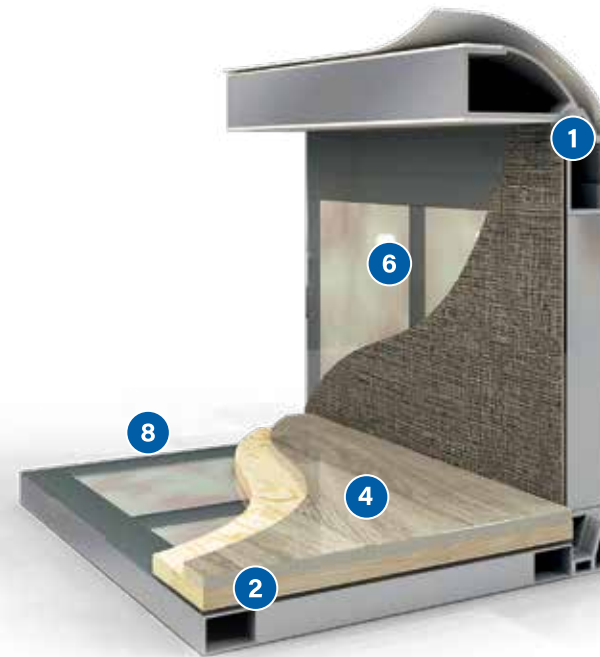


HOLIDAY RAMBLER



We build strength and quality from the inside out.

Holiday Rambler's exclusive Powerlock™ system is integrated into all Holiday Rambler Class A Gas models.*



At Holiday Rambler, we don't settle for anything less than the best and neither should you. That is why every Holiday Rambler features industry-leading materials and construction standards.

- 1 **PowerLock System™ Interlocking Walls, Ceiling**
Holiday Rambler's interlocking aluminum extrusion wall-joint system integrates sidewall and roof assembly into one locked-together overall structure for long-term performance and durability.
- 2 **Precision Welded Joints**
The all aluminum hull structure is engineered and built to precise tolerances and then precision welded to ensure strength and durability on even the roughest road trip.

*Powerlock™ is integrated into all Holiday Rambler Class A Gas models, with some exceptions to Invicta. See dealer for details.

At Holiday Rambler, it's not just what you see that matters. It's what you don't.

- 3 **Tuff-Coat Fiberglass Walls**
Thicker than other manufacturers, our Tuff-Coat fiberglass walls provide a durable skin and is the perfect surface for an automotive style finish.
- 4 **Thick Robust Floor**
Thicker than the industry standard, Fleetwood engineered the floor for more sound deadening and more insulation which results in a quieter, more comfortable ride no matter the weather or terrain outside.
- 5 **Solid Bead-Foam Insulation™**
Holiday Rambler's above-standard insulation material and process doesn't allow settling or air gaps to form. There is no forcing the precision cut insulation into position like the roll-type pink fiberglass insulation used by other manufacturers.
- 6 **Loctite® Industrial Adhesive**
Engineered to meet bonding, sealing and assembly requirements for a durable structure with no de-lamination.
- 7 **No Wood Substrate**
Unlike most Class A motorhome manufacturers, you won't find any wood substrate on the exterior walls.
- 8 **1/2" Plywood Subfloor**
Thicker than most competitors who use OSB or chip board, the integrated 1/2" subfloor provides a solid surface for flooring and eliminates movement and flexing while traveling.
- 9 **Vacu-Bond™ Construction**
Fully sealed and weather-resistant, the vacuum-bonded assemblies combine materials and construction for a straight, solid integrated wall that is better suited to withstand the rigors of the road. An adhesive bonding process applies up to 415,000 pounds of vacuum pressure to the welded-aluminum sidewall frame, bead-foam insulation, thick Tuff-Coat fiberglass skin and inner wall materials, far exceeding industry standards.
- 10 **CNC Precision Routed Walls and Floors**
Computer driven routers precisely route walls and floors to fit exact specifications to eliminate gaps, misalignments and provide for a more solid integrated overall structure.



Each of these advantages have been engineered to deliver superior reliability, durability and most of all, customer satisfaction.

INVICTA 34MB

Shown in Biscotti Decor with Amber Cabinetry





Never look back.

The 2021 Holiday Rambler Invicta has everything you need to keep moving, no matter where your wanderlust leads. Standard traction control and four-point fully automatic hydraulic leveling jacks help you conquer every hill and hug every curve. An all-new electronic instrument panel lets you hit the road with confidence. And loads of onboard innovations like the lighted power entry step, Illumaplex MultiPlex control system, and Sony® Dash Stereo with CarPlay keep the whole crew comfortable. On top of it all, bold new fabrics and finishes and two new floorplan options let you make it your own. Whether it's your first RV or a long-awaited upgrade, the Invicta puts dream vacations in reach. [Floorplans available 32RW | 33HB | 34MB | 36DB.](#)



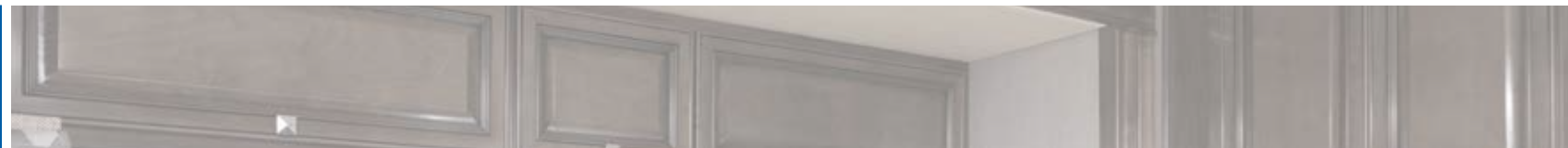
INVICTA
by HOLIDAY RAMBLER

2021 CLASS A GAS

2021

INVICTA 34MB

Shown in Biscotti Decor with Amber Cabinetry



INVICTA 32RW

Shown in Slate Decor with Whispering Wind Cabinetry



2021

2021 CLASS A GAS

INVICTA
by HOLIDAY RAMBLER

INVICTA 32RW

Shown in Slate Decor with Whispering Wind Cabinetry





INVICTA
by HOLIDAY RAMBLER

CLASS A GAS



2021



CONFIDENCE BEHIND THE WHEEL

From behind the wheel you will feel the power and feel in total control with digital information gauges, cruise control, 6" color monitor for side and rear cameras. Sony® 9" stereo system with Bluetooth® connectivity, CarPlay®, and SiriusXM® ready along with a backup camera.

AUTO HYDRAULIC LEVELING SYSTEM

Save time and avoid hassle by leveling and stabilizing your RV with the push of a button conveniently located on the dash

CENTER CONSOLE

New for 2021 Driver/Passenger caddy area with three cupholders, USBs and various storage compartments



Invicta 34MB Shown in Cinnamon Parial Paint Graphics

ELECTRIC PATIO AWNING
 Legged Electric Patio Awning with LED Lighting and
 Slide-out Awning Toppers Above all Slide-outs
 are standard

2021

CLASS A GAS

INVICTA
 by HOLIDAY RAMBLER

INVICTA FLOORPLANS

TOP FLOORPLAN FEATURES

32RW

- Ducted A/C System
- Stainless Steel Farmhouse Galley Sink
- 3-Burner Gas Range w/Glass Covers
- Large Master Bedroom and Wardrobe
- Added Exterior Storage Above the Belt Line
- Sony® Dash Stereo w/CarPlay

33HB

- C-PAP Storage in Bedroom Overhead Cabinetry
- Two Lavys Full and a Half
- 40" LED Smart TV in Living Room
- Additional Wardrobe and Dresser Bedroom Storage
- Added Exterior Storage Above the Belt Line
- Sony® Dash Stereo w/CarPlay

34MB

- Deep Pantry Storage Functions as a Lazy Susan with Additional Deep Storage Shelves Behind
- Sofa Sleeper 72"
- IllumaPlex Control System w/App.
- Power Ceiling Vents
- Generous Wardrobe and Dresser Bedroom Storage
- Electric Fireplace
- Sony® Dash Stereo w/CarPlay

36DB

- Bunk Beds 28" x 75" with Sliding Barn Doors
- C-PAP Storage in Master Bedroom
- IllumaPlex Control System w/App.
- Power Ceiling Vents
- Generous Wardrobe and Dresser Bedroom Storage
- Mid Lavy Includes Tub/Shower with Enclosure
- Sony® Dash Stereo w/CarPlay
- 26,000# Chassis

INVICTA OPTIONS

- 096 KING® Universal Satellite System
- 105 Dometic 8CF Double Door Refrigerator - LP
- 126 Washer/Dryer — All in one combo
- 131 Washer/Dryer — Stackable
- 194 Theater Seating
- 230 Roof Vent Rain Covers
- 471 Steering Stabilizer System
- 580 Collision Mitigation
- 605 Dual Glazed Windows
- 953 Power Driver Seat



OPT. 126
WASHER & DRYER
COMBO

OPT. 131
WASHER & DRYER
STACKABLE



OPT. 194
78" THEATER SEATING

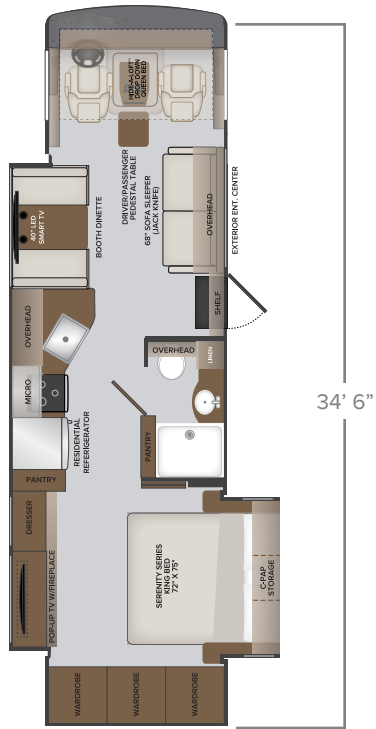
Visit our website and find the
closest dealer near you.



holidayrambler.com

#thisisliving

32RW

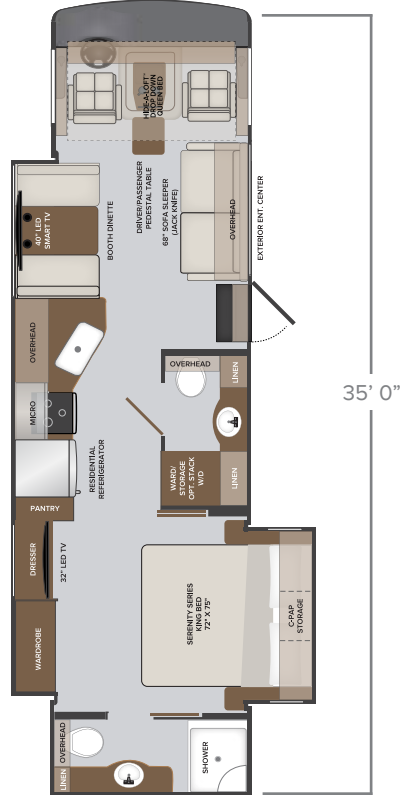


32RW OPTIONS

096 | 105 | 126 | 131 | 194
| 230 | 471 | 580 | 605 | 953

SLEEPS
up to 6

33HB

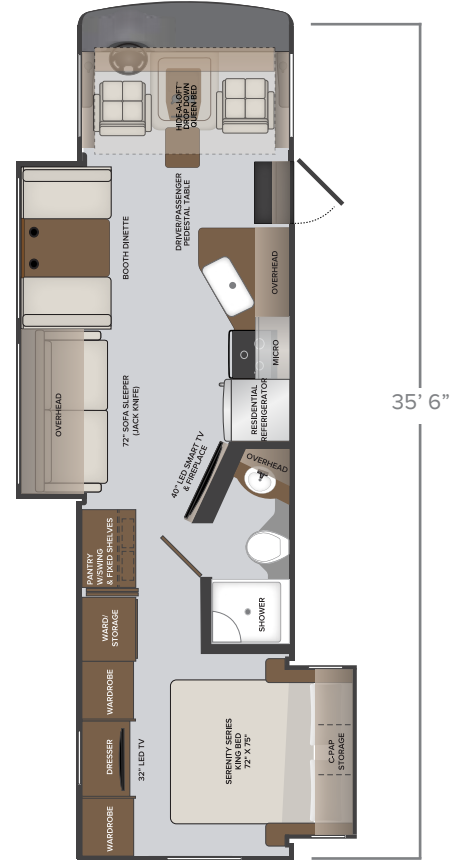


33HB OPTIONS

096 | 105 | 126 | 131 | 194
| 230 | 471 | 580 | 605 | 953

SLEEPS
up to 6

34MB

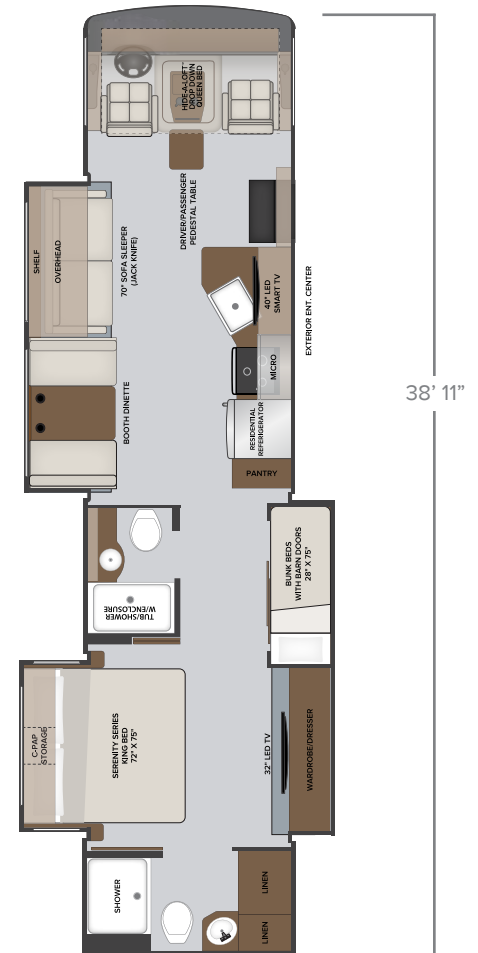


34MB OPTIONS

096 | 105 | 126 | 131 | 194
| 230 | 471 | 580 | 605 | 953

SLEEPS
up to 6

36DB



36DB OPTIONS

096 | 126 | 194
| 580 | 671

SLEEPS
up to 8

INVICTA EXTERIOR GRAPHICS



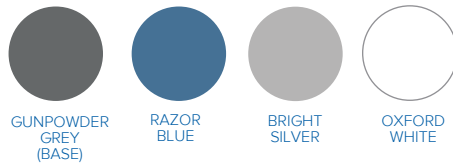
CINNAMON PARTIAL PAINT



SAPPHIRE PARTIAL PAINT



REGENCY FULL BODY PAINT



TRIUMPH FULL BODY PAINT



SUMOSPRINGS® CHASSIS STABILIZER SYSTEM (FRONT & REAR, UPGRADE)

Are a patented suspension product designed to enhance load carrying capacity, stabilize sway, and improve overall driver control and ride comfort. Maintenance-free, do not leak air, and do not require airlines/compressors. Reduces vibration, wear and tear which affects the tires, suspension, brakes, furniture, hinges and more! SumoSprings are an upgrade that reduces ownership costs by decreasing overall wear and tear, increasing the life of each component of your Holiday Rambler. This increase means reduced costs on maintenance and replacement parts resulting in a lower total cost of ownership.

BILSTEIN® STEERING STABILIZER SYSTEM

Bilstein steering stabilizer system is a shock absorber system that dampens the bumps and vibrations of the road in the steering system. Bilstein allows for easier control to the front-end steering.



INVICTA DECOR

BISCOTTI



SOFA



LIVING ACCENT



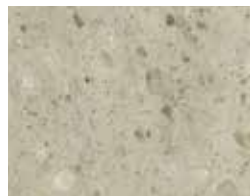
BEDSPREAD



VALANCE



BACKSPLASH



COUNTERTOP



FLOORING

CARBON



SOFA



LIVING ACCENT



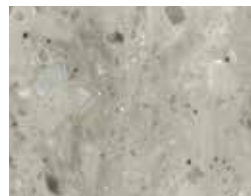
BEDSPREAD



VALANCE



BACKSPLASH



COUNTERTOP



FLOORING

SLATE



SOFA



LIVING ACCENT



BEDSPREAD



VALANCE



BACKSPLASH



COUNTERTOP



FLOORING



AMBER



FOSSIL



NUTMEG



WHISPERING WIND

INTERIOR DESIGNER RECOMMENDATIONS:

- Biscotti Decor with Amber or Nutmeg Cabinetry
- Carbon Decor with Fossil or Whispering Wind Cabinetry
- Slate Decor with Fossil or Whispering Wind Cabinetry



INVICTA

EXTERIOR	32RW	33HB	34MB	36DB
Aerodynamic Fiberglass Cap w/Hood and Automotive-Style Headlighting	S	S	S	S
Rear Fiberglass Cap w/ Automotive-Style Lighting	S	S	S	S
ABS Wheel Well Trims	S	S	S	S
TPO Roof: Thermoplastic Polyolefin	S	S	S	S
Legged Electric Patio Awning w/ LED Lighting	S	S	S	S
Radiused Entry Door w/Screen Door, Latch, and Deadbolt Lock	S	S	S	S
Slide-out Awning Toppers Above All Slide-outs	S	S	S	S
Slam Latch Baggage Door Handles, Black	S	S	S	S
Entry Grab Handle	S	S	S	S
Power Entry Step w/Light	S	S	S	S
Bottom and Side-Swing Radiused, Color-Matched Fiberglass Baggage Doors	S	S	S	S
Single-Pane Frameless Windows	S	S	S	S
Dual-Pane Frameless Windows	O	O	O	O
Patio LED Light	S	S	S	S
Clearance and Marker Lighting at Front, Side, and Rear	S	S	S	S
Gravity Fresh Water Fill	S	S	S	S
Enclosed Exterior Waste Station w/Discharge Valves	S	S	S	S
Trailer Hitch w/7-Way Round Tow Connection (8,000 lbs.)	S	S	S	S
Unidirectional KING® Controls Jack Antenna	S	S	S	S
LP Connection	S	S	S	S
4-Point Fully-Automatic Hydraulic Leveling Jacks	S	S	S	S
Rear Ladder	S	S	S	S
Partial Paint w/Vinyl Graphics	S	S	S	S
Full-Body Paint	O	O	O	O
Roof Vent Rain Covers	O	O	O	O
Roof-Mounted Satellite Dish Prep	S	S	S	S

KING® Universal Satellite System	O	O	O	O
CAB EXTERIOR	32RW	33HB	34MB	36DB
Automotive-Style One-Piece Windshield	S	S	S	S
Daytime Running Lights	S	S	S	S
Driver and Passenger Slider Windows	S	S	S	S
Fog Lamps	S	S	S	S
Automotive-Style Windshield Wiper System	S	S	S	S
Remote Power and Heated Mirrors w/Turn Signals and Side Cameras, Chrome/Black	S	S	S	S
Sumo Springs	O	O	O	O
Bilstein® Steering Stabilizer	O	O	O	O
CAB INTERIOR	32RW	33HB	34MB	36DB
Driver Chair w/Reclining Back, Swivel, and Manual Controls	S	S	S	S
Driver Chair w/Reclining Back, Swivel, and 6-way Power Controls	O	O	O	O
Passenger Chair w/Reclining Back, Swivel, and Manual Controls	S	S	S	S
Driver and Passenger ABS-Style Armrests	S	S	S	S
Driver/Passenger Cupholders	S	S	S	S
Power Windshield Roller Shade	S	S	S	S
Driver and Passenger Manual Window Roller Shades	S	S	S	S
Driver and Passenger Overhead Map Lighting	S	S	S	S
Black Instrument Gauges w/ Electronic Information Center	S	S	S	S
High-Output Dash Air Conditioning and Heat	S	S	S	S
Electronic Cruise Control	S	S	S	S
Windshield Wipers w/Delay	S	S	S	S
Remote Switch for Power and Heated Mirrors	S	S	S	S
Steering Wheel w/Tilt Column	S	S	S	S
6" Color Monitor for Side and Rear Cameras	S	S	S	S

Sony® 9" Stereo w/AM/FM/Bluetooth®/MP3/USB, Android® Auto and Apple® CarPlay® w/Navigation Phone Control, Siri® Eyes Free, Built in HD Stereo, SiriusXM® Ready (Requires Subscription), and Backup Camera	S	S	S	S
Collision Mitigation	O	O	O	O
USB and Auxiliary Inputs	S	S	S	S
Seat Belts: 3-Point Driver and Passenger w/Adjustable Straps	S	S	S	S
12V Accessory Ports	S	S	S	S
110V AC Outlets	S	S	S	S
Automotive-Style Dash w/Dual Monitors and Work Station	S	S	S	S
Generator On/Off Switch	S	S	S	S
Engine Cover w/Snack Tray	S	S	S	S
Automatic Leveling Jack Controls	S	S	S	S
Driver and Passenger Center Table	S	S	S	S
Auxiliary Start Switch	S	S	S	S
Hide-A-Loft™ Drop-Down Queen-Sized Bed	S	S	S	S
INTERIOR	32RW	33HB	34MB	36DB
Jackknife Sofa	S	S	S	S
Theater Seating Sofa	O	O	O	O
Facing-Booth Dinette w/Dream Easy® Dinette Table and Single-Door Storage	S	S	S	S
Solid-Surface Galley Top w/Sink Covers	S	S	S	S
Surf(x)® Tops Throughout (Excluding Galley)	S	S	S	S
Electric Fireplace	—	—	S	—
Feature Wall w/Accent Wall Covering	S	S	S	S
Feature Wall w/Surf(x)® Covering	—	—	S	—
Flat Ceiling w/Soft-Touch Vinyl	S	S	S	S
Vinyl Tile Flooring Throughout	S	S	S	S
Non-Ozite-Lined Cabinet Interiors w/Adjustable Shelving	S	S	S	S
Full-Extension Drawer Guides w/Latches	S	S	S	S
Hidden Euro-Style Hinges and Struts	S	S	S	S
Solid-Wood, Raised-Panel Cabinet Doors	S	S	S	S

Galley Overhead Glass Inserts	S	S	S	S
Slide-out Fascia: Hardwood Interior Wood Color Coordinating	S	S	S	S
Valances w/Lambrequins	S	S	S	S
Manual Night Roller Shades	S	S	S	S
Energy-Efficient 3" LED Flush-Mounted Ceiling and Under Cabinet Reading Lights Throughout	S	S	S	S
Chrome Faucets, Fixtures, and Hardware	S	S	S	S
INTERIOR ENTRY	32RW	33HB	34MB	36DB
Battery Disconnect	S	S	S	S
Metal Interior Entry Grab Handle	S	S	S	S
Entry Steps w/Pressed Tops	S	S	S	S
KITCHEN	32RW	33HB	34MB	36DB
Refrigerator: Insignia™ Residential, Stainless Steel	S	S	S	S
Refrigerator: LP 8 cu.ft. Dometic®	O	O	O	O
3-Burner Cooktop	S	S	S	S
Stainless Steel Over-the-Range Convection Microwave	S	S	S	S
Tile Backsplash	S	S	S	S
Farmhouse-Style Sink, Stainless Steel	S	S	S	S
Residential Single-Handled Faucet w/Pull-Out Sprayer	S	S	S	S
Adjustable Shelves Throughout	S	S	S	S
Power Ceiling Vent	S	S	S	S
BEDROOM OR BUNK AREA	32RW	33HB	34MB	36DB
King-Sized Bed	S	S	S	S
Designer Bedspread, Headboard, Pillow Shams, and Pillows	S	S	S	S
C-PAP Machine Prep in Bedroom Overhead	S	S	S	S
120V and USB Ports	S	S	S	S
Reading Lights	S	S	S	S
BATHROOM	32RW	33HB	34MB	36DB
Top-Mounted Stainless Steel Sink	S	S	S	S
Single-Handled Residential Faucet	S	S	S	S
Medicine Cabinet w/Mirror	S	S	S	S

ABS Shower Surround	S	S	S	S
Glass Shower Door	S	S	S	S
Shower Skylight	S	S	S	S
Metal Shower Head w/Sliding Adjustable Bar, Soap Dish, and Matching Single-Valve Faucet	S	S	S	S
Porcelain Standard Toilet	S	S	S	S
Porcelain Macerator Toilet	—	S	—	S
Power Ceiling Vent	S	S	S	S
ENTERTAINMENT	32RW	33HB	34MB	36DB
32" Flat Screen LED TV (Bedroom)	S	S	S	S
39" Flat Screen Smart LED TV (Living Area)	S	S	S	S
Living Area Ceiling Speakers	S	S	S	S
Bluetooth® Coach System in Bedroom w/Exterior Speakers	S	S	S	S
Exterior Entertainment Center: 50" LED TV	S	S	S	S
ELECTRIC AND UTILITIES	32RW	33HB	34MB	36DB
A/C: Dual 13,500 BTU	S	S	S	S
Furnace: 20,000 BTU *rear on 36DB	—	—	—	S*
Furnace: 30,000 BTU *front on 36DB	S	S	—	S*
Furnace: 34,000 BTU	—	—	S	—
50 Amp Service	S	S	S	S
55 Amp Power Converter	S	S	S	S
Single 2000W Inverter	S	S	S	S
WiFiRanger™ Sky4	S	S	S	S
100W Solar Panel	S	S	S	S
Multiplex Wiring Control System w/4.3" Touch Screen Panel	S	S	S	S
6V Axillary Batteries (4)	S	S	S	S
Generator: 5.5kW Onan Quiet	S	S	S	S
Automatic Generator Start	S	S	S	S
Master Battery Disconnect Switch	S	S	S	S
12V 3GPM High-Capacity SHURflo® Water Pump	S	S	S	—
12V 5.3GPM High-Capacity AquaJet Water Pump	—	—	—	S
Water Purification System	S	S	S	S
Water Heater Bypass System	S	S	S	S

*Invicta 36DB, 20,000 BTU Furnace in Rear, 30,000 BTU Furnace in Front

City Water Hook-Up	S	S	S	S
Exterior Shower	S	S	S	S
Cable TV and Satellite Hook-Up	S	S	S	S
San-T-Flush™ Black Holding Tank Flush System	S	S	S	S
Single-Location Monitor Panel w/LPG, Touch Sensor Tank Monitoring and Battery Readouts	S	S	S	S
Fire Extinguisher, LP, Carbon Monoxide, and Smoke Detectors	S	S	S	S
GFCI Receptacle in Exterior Storage	S	S	S	S
Combination Washer and Dryer Prep	S	S	S	S
Combination Washer and Dryer	O	O	O	O
Stackable Washer and Dryer	O	O	O	O

DEEP ADDITIONAL STORAGE AND CLOSET SPACE

This innovative feature functions like a lazy susan with the additional pantry item shelf storage and with a simple turn of the door to reveal behind a large shelving stow area. Available on the 34MB floorplan.



Pantry shelves



Deep storage shelves behind the pantry shelves

INVICTA TOP FEATURES



RENEWABLE SAFE POWER

Each Invicta comes standard with a 100 watt solar panel.

WIFI RANGER™ SKY4 DC

Boost a weak signal to get online in no time with this private secure WiFi booster.



BONDED WINDSHIELD

Feel safer with this automotive style curved bonded windshield. Automotive inspired design bonds the windshield along the entire perimeter of the glass. This increases the structural strength and also reduces the risk of stress cracks.



CREATIVE SPACE CONFIGURATION
Facing booth dinette with Dreameasy® dinette table and single-door storage on all floorplans.



AUTO GENERATOR START

Batteries need charging? A/C needs to kick on? This feature will automatically turn on your generator to give them some juice and then turn off when they have enough charge.



KING EURO TOP MATTRESS

Sleep like royalty in this spacious 76" x 72" luxurious residential style bed with a euro top mattress. Shown 34MB Biscotti decor with Amber cabinetry. Includes 120V and USB ports by bed and reading lights overhead.



(32RW, 33HB ONLY)

EXTERIOR STORAGE

Additional above the belt line storage is standard on the 32RW, 33HB floorplans.



EXTERIOR ENTERTAINMENT CENTER

Every Invicta is standard equipped with an exterior entertainment center with 50" LED TV for additional entertaining space.



HIDE-A-LOFT™ DROP DOWN BED

Invite more guests on your road trip without compromising space with this queen bed, featuring industry-leading headroom and up to 600 lb capacity.



AUTO HYDRAULIC LEVELING SYSTEM (STANDARD)

Save time and avoid hassle by leveling and stabilizing your RV with the push of a button.

CONFIDENCE BEHIND THE WHEEL

From behind the wheel you will feel the power and feel in total control with digital information gauges, cruise control, 6" color monitor for side and rear cameras. Sony® 9" stereo system with Bluetooth® connectivity, CarPlay®, and SiriusXM® ready along with a backup camera.



ALCOA® WHEELS (STANDARD)

Every Invicta is equipped with Alcoa wheels. Alcoa wheels are designed for increased load requirements. Not only do these wheels look good but they are made to last for the long haul with less maintenance.

WASHER/DRYER OPTIONS (UPGRADE)

All the amenities of home-sweet-home with washer and dryer options available. Choose from an all-in one combo unit or a stackable unit conveniently tucked away in the master bedroom.



CHASSIS

MODEL	32RW	33HB	34MB	36DB
Wheelbase (inches)	228"	228"	242"	252"
Front GAWR (lbs)	8,000	8,000	9,000	9,000
Rear GAWR (lbs)	15,000	15,000	15,000	17,500
GCWR (lbs)	26,000	26,000	26,000	30,000
GVWR (lbs)	22,000	22,000	22,000	26,000
Hitch Rating Weight (lbs)	8,000	8,000	8,000	8,000
Tongue Weight (lbs)	800	800	800	800
Fuel Capacity (lbs)	80	80	80	80

DIMENSIONS & CAPACITIES

MODEL	32RW	33HB	34MB	36DB
Overall Length (inches)	34' 6"	35' 0"	35' 6"	38' 11"
Overall Height (inches with A/C)	12' 10"	12' 10"	12' 10"	12' 10"
Overall Width (inches maximum)	100"	100"	100"	100"
Interior Height (inches maximum)	82"	82"	82"	82"
Interior Width (inches maximum)	96"	96"	96"	96"
Patio Awning Width (ft. & in.)	14'	14'	20'	12'
Interior Storage (cu. ft.)	N/A	152	128	N/A
Exterior Storage (cu. ft.)	N/A	145	134	N/A
Fresh Water Holding Tank (gal)	100	100	100	100
Grey Water Holding Tank (gal)	50	50	50	80
Black Water Holding Tank (gal)	50	50	50	50
Appliance Propane Tank (gal) (WC)	25	25	25	25
Water Heater Tank (gal)	10	10	10	Tankless



FORD® CHASSIS

Model: Ford®

Engine: 7.3L Triton V8

Transmission: Ford® 6-Speed, Automatic w/Overdrive

Torque: 468 lb.-ft. @ 3,000 RPM

Horsepower: 350HP @ 3,900 RPM



DISCLAIMER

1. GVWR (Gross Vehicle Weight Rating) is the maximum permissible weight of this fully loaded motorhome. The GVWR is equal to or greater than the sum of the (UVW) unloaded vehicle weight plus the (OCCC) occupant cargo-carrying capacity*.

2. GAWR (Gross Axle Weight Rating) is the maximum permissible loaded weight a specific axle is designed to carry.

3. GCWR (Gross Combined Weight Rating) is the value specified by the motorhome manufacturer as the maximum allowable loaded weight of this motorhome with its towed vehicle. Towing and braking capacities may be different. Refer to Holiday Rambler and chassis manufacturer's manuals for complete information.

4. Length measured from front bumper to rear bumper (excludes accessories).

5. Excludes safety equipment and awnings.

6. Motorhomes feature a body width over 96" which will restrict your access to certain roads. Before purchasing, you should research any state and/or province road laws which may affect your usage.

7. Tank manufacturer's listed water capacity (WC). Actual propane capacity is 80% of water listing as required by the safety code.

* The chassis manufacturer recommends the installation of a supplemental brake control system to activate the brakes on the vehicle or trailer you are towing. Hitch receiver ratings expressed are maximum for the hitch receiver installed and may require the purchase of additional equipment that is dependent on the weight of the towed load. Consult with hitch receiver manufacturer for further information.

* UVW and OCCC are found on the label containing the federal certification tag in each RV.

** The Minimum Towable Load of this vehicle is the available weight capacity, up to GCWR, when the coach is fully loaded to maximum GVWR. However, if the coach is loaded to something less than maximum GVWR, that extra available weight capacity can be added to your Towable Load. For example, if your coach is loaded to 1000lbs less than maximum GVWR, your Towable Load increases accordingly. Do not exceed the hitch rating weight, GVWR or GCWR.

***All 2021 REV Recreation Group motorhomes include a limited one-year/15,000-mile coach warranty and three-year/45,000-mile structural warranty, whichever occurs first, and is fully transferable for the first 12 months.



YOUR LOCAL DEALER



About REV Group, Inc.

REV GROUP

REV Group® (REVG) is a leading designer, manufacturer, and distributor of specialty vehicles and related aftermarket parts and services. We serve a diversified customer base, primarily in the United States, through three segments: Fire & Emergency, Commercial, and Recreation. We provide customized vehicle solutions for applications, including essential needs for public services (ambulances, fire apparatus, school buses, and transit buses), commercial infrastructure (terminal trucks and industrial sweepers) and consumer leisure (recreational vehicles). Our diverse portfolio is made up of well-established principal vehicle brands, including many of the most recognizable names within their industry. Several of our brands pioneered their specialty vehicle product categories and date back more than 50 years. REV Group trades on the NYSE under the symbol REVG. Investors-REVG

IMPORTANT—PLEASE READ: Product information, photography and illustrations included in this publication were as accurate as possible at the time of printing. For further product information and changes, please visit our website at www.holidayrambler.com or contact your local Holiday Rambler dealer. Prices, materials, design and specifications are subject to change without notice. All weights, fuel, liquid capacities and dimensions are approximate. Holiday Rambler has designed its recreational vehicles to provide a variety of uses for its customers. Each vehicle features optimal seating, sleeping, storage and fluid capacities. The user is responsible for selecting the proper combination of loads (i.e., occupants, equipment, fluids, cargo, etc.) to ensure that the vehicle's capacities are not exceeded.

holidayrambler.com



©2020 REV Group, Inc. Printed in the USA. 11/20. Model Year 2021, First Edition.

Part #: L93-0031-21



OUR VERY OWN HOLIDAY RAMBLER MOTORHOME SERVICE CENTERS

At Holiday Rambler, we strive to deliver peace-of-mind at every turn. Our devotion to customer service starts with

our trusted dealer network and spans to our own staff of motorhome service professionals at REV Recreation Group's regional technical centers. The motorhome service centers are strategically located throughout the United States to provide you convenient service wherever the road takes you.

Below, you'll find the closest motorhome service center, as well as a list of the other centers. Please visit www.holidayrambler.com/motorhome-service-centers

East Coast

REV RV Service & Repair
800-509-3417

West Coast

REV RV Service & Repair
877-466-6226

ROADSIDE ASSISTANCE. ANYWHERE. ANYTIME.

24/7 CUSTOMER SUPPORT FOR:

- FUEL
- TOWING
- BATTERY
- SLIDE-OUT ISSUES
- LOCKSMITH
- AND MUCH MORE!

1-855-268-0414



One-year of REV Assist is free with the purchase of any new 2021 Holiday Rambler. You may extend your coverage after the first year at www.revgroup.com/rev-assist.