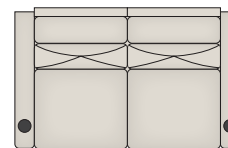


33TL Options: 086 | 096 | 131 | 189 | 209 | 217 | 230 | 242 | 436 | 572 | 579 | 671 | 965

TOP FLOORPLAN FEATURES

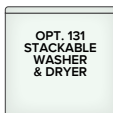
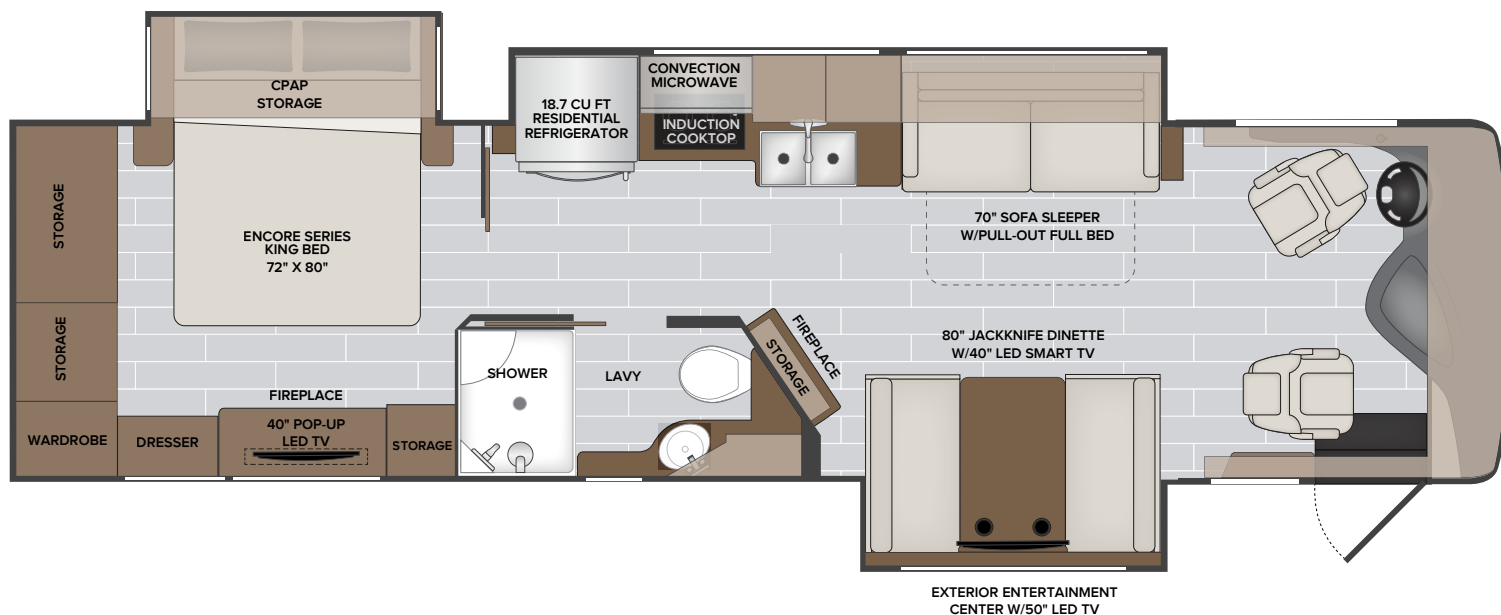
1. Sleeping up to 7
2. Triple Slide Floorplan
3. Abundance of Master Bedroom Storage
4. Articulating King Bed
5. 39" Pop-up TV & Fireplace in Bedroom
6. CPAP Storage Overhead Cabinetry in Master Bedroom
7. Fireplace at Feature Wall
8. Solid Surface Galley w/Full Backsplash
9. Feature Cabinet w/Glass Door & Accent Light and Fireplace
10. Fiberglass Shower Enclosure



OPT. 209
MOTION POWER LOUNGE



OPT. 217
HIDE-A-LOFT™
DROP DOWN
QUEEN BED
W/32" LED TV



OPT. 131
STACKABLE
WASHER
& DRYER

NAUTICA OPTIONS

- | | | | |
|-----|---------------------------------------|-----|---|
| 086 | Connectivity Package | 242 | Dual 15K BTU A/C |
| 096 | KING® Universal Satellite System | 436 | CSA — Freightliner Package |
| 131 | Washer/Dryer — Stackable | 572 | Central Vacuum System |
| 189 | Power Passenger Seat w/Power Footrest | 579 | Mobileye Collision Mitigation + Safe-T-View Interior Camera Display |
| 209 | Motion Power Lounge | 671 | Power Cord Reel |
| 217 | Hide-a-Loft™ Drop Down Queen Bed | 965 | 1st Full Bay 90" S/O Tray |
| 230 | Roof Vent Rain Covers | | |