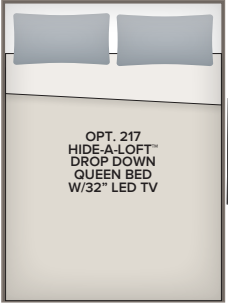
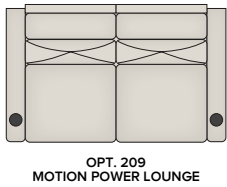
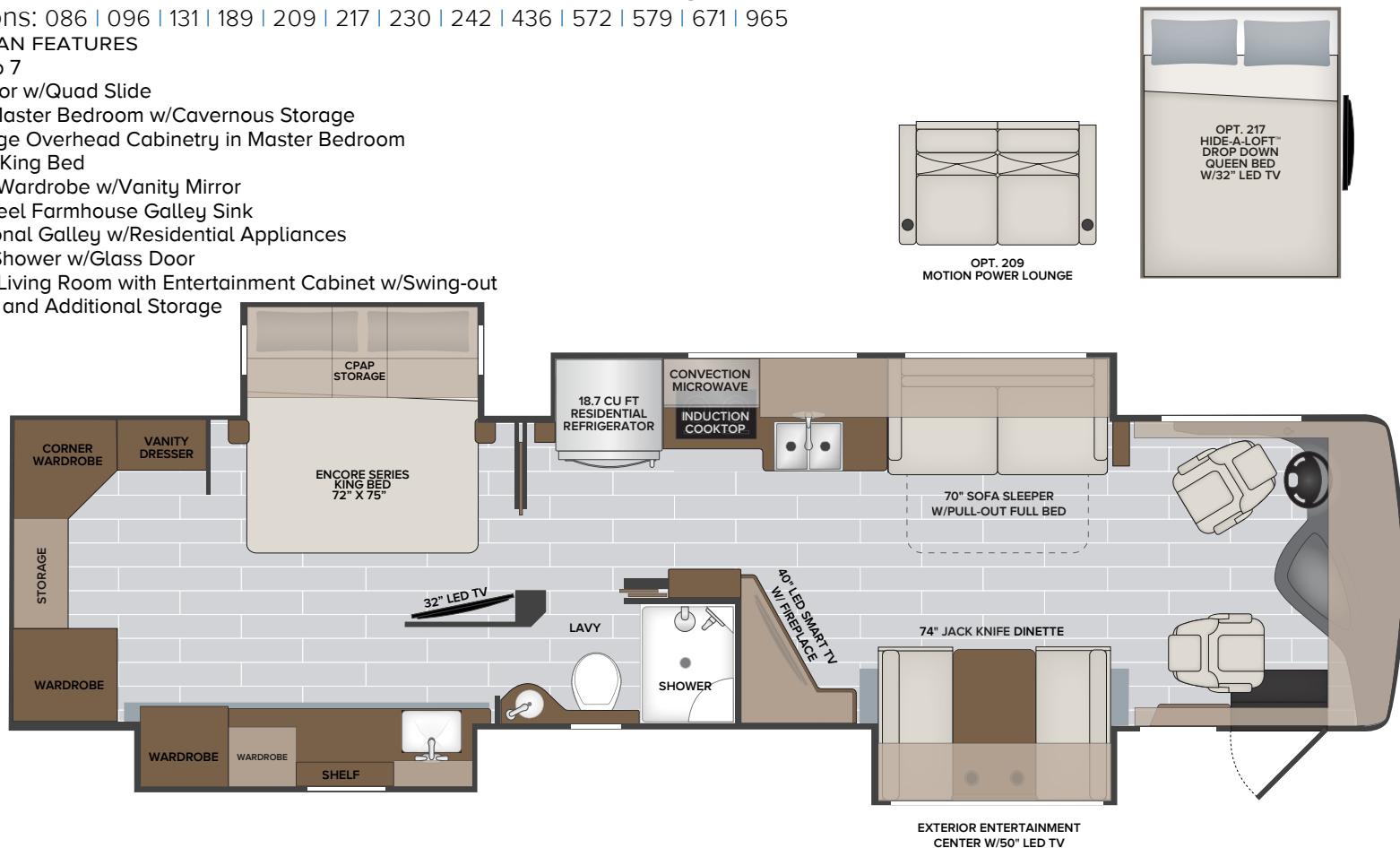


35MS Options: 086 | 096 | 131 | 189 | 209 | 217 | 230 | 242 | 436 | 572 | 579 | 671 | 965

TOP FLOORPLAN FEATURES

1. Sleeps up to 7
2. Full Flat Floor w/Quad Slide
3. Enormous Master Bedroom w/Cavernous Storage
4. CPAP Storage Overhead Cabinetry in Master Bedroom
5. Articulating King Bed
6. Large Rear Wardrobe w/Vanity Mirror
7. Stainless Steel Farmhouse Galley Sink
8. Ultra-functional Galley w/Residential Appliances
9. Fiberglass Shower w/Glass Door
10. Residential Living Room with Entertainment Cabinet w/Swing-out w/Fireplace and Additional Storage



NAUTICA OPTIONS

- | | | | |
|-----|---------------------------------------|-----|---|
| 086 | Connectivity Package | 242 | Dual 15K BTU A/C |
| 096 | KING® Universal Satellite System | 436 | CSA — Freightliner Package |
| 131 | Washer/Dryer — Stackable | 572 | Central Vacuum System |
| 189 | Power Passenger Seat w/Power Footrest | 579 | Mobileye Collision Mitigation + Safe-T-View Interior Camera Display |
| 209 | Motion Power Lounge | 671 | Power Cord Reel |
| 217 | Hide-a-Loft™ Drop Down Queen Bed | 965 | 1st Full Bay 90" S/O Tray |
| 230 | Roof Vent Rain Covers | | |