

Handling instructions for electrically heated SCR PA lines



Keep quick connectors and lines clean!

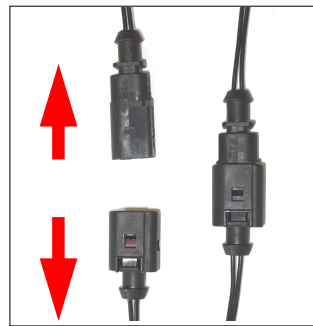
Do not remove protection caps until final assembly!



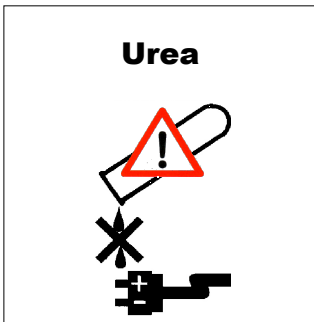
Do not squeeze or kink the lines!



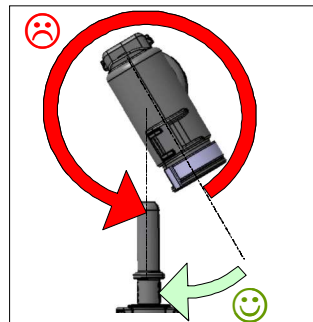
Protect quick connectors against dirt during assembly/ disassembly!



Take care of proper electrical connections!



Contact of electrical plug with urea not allowed!



The line has to be positioned free of tension in the vehicle.

In the connecting process the maximum torsion angle must not be exceeded.



Protect line and connectors against damages especially during assembly/ disassembly!

e.g.
- crushing with zip ties
- disassembly with screwdriver

Maximum torsion

Line length	Maximum torsion angle
< 1 m	20°
1 – 1.5 m	45°
1.5 – 2 m	90°
> 2 m	180°

A fixing of lines, e. g. with zip ties, has not to be carried out until the hydraulic connection is made.

Under normal environmental conditions (refer to ISO 291) the maximum duration of storage is 5 years. Exposure to direct sunlight, UV light sources or heat sources (e.g. radiators) is not permitted. In case of assembling SCR lines 6 months after its manufacturing date, re-lubrication of O-rings is recommended for easier assembly. Use VOSS grease 9499000526 on male pin before attaching the SCR line.