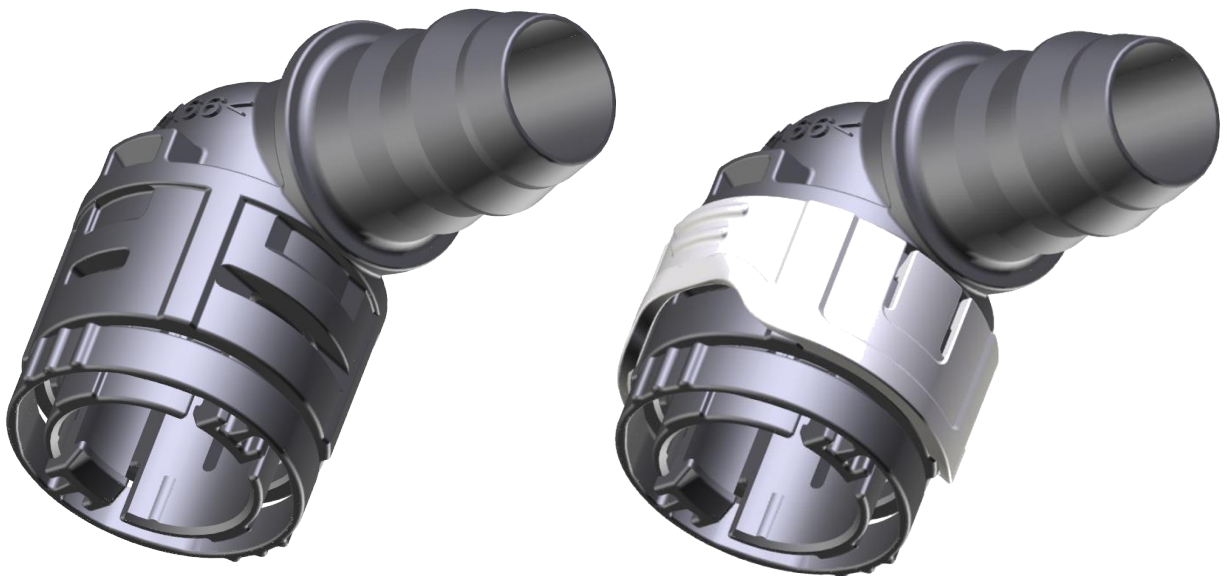


## Product information quick connect system 270

Plastic couplings for the fir-tree connection of cooling lines, especially for battery temperature control

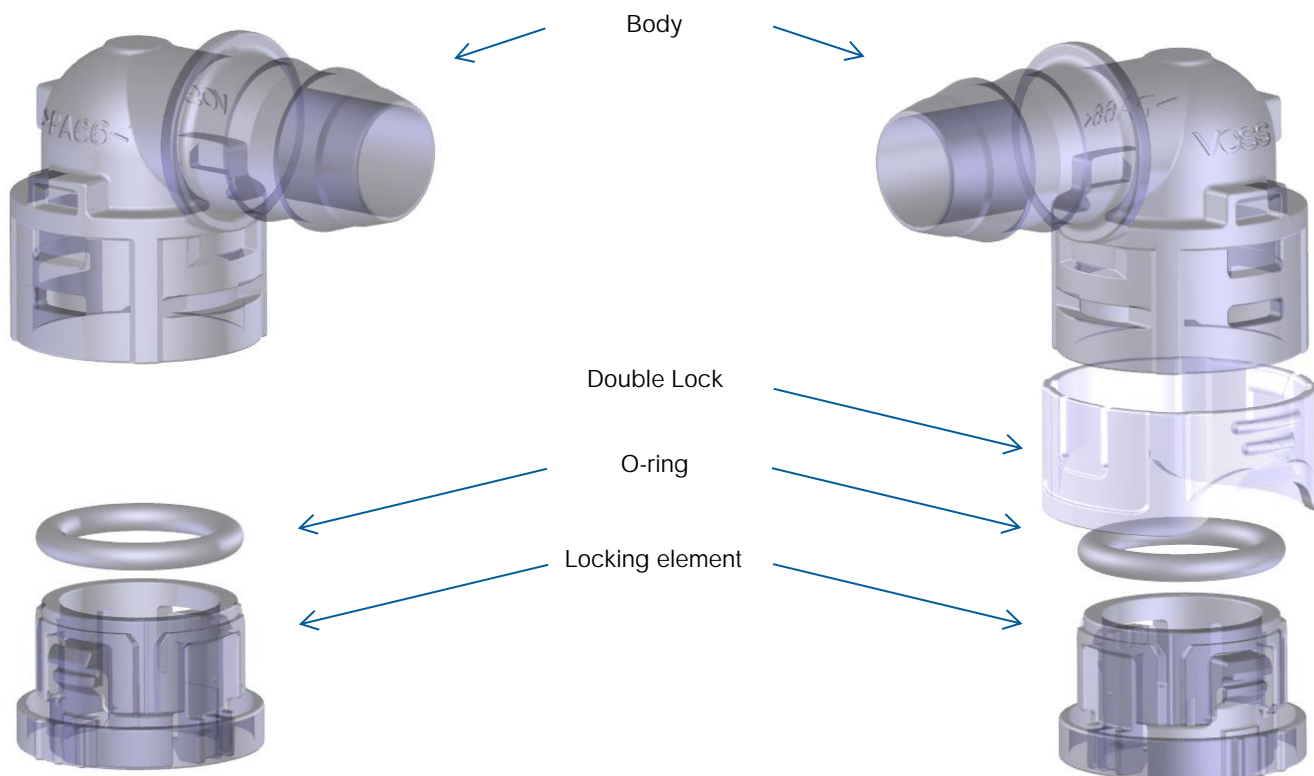


- In case of limited assembly space connector can be supplied with release mechanism in two different positions
- Connecting port acc. to VOSS standard, particularly suitable for components to filigree cooling plates and similar components
- Very low system height
- Easy handling
- Tool-free disassembly
- Optional: Double Lock (DL) as additional safety device
- Double Lock can only be activated (moved) with connector in final position
- Visual and haptic indication of the secure position

The benchmark for customized connection solutions in thermal management

## VOSS quick connect system 270

## VOSS quick connect system 270<sup>DL</sup>



- Connection of PA tubes
- Straight and elbow connectors made of plastic
- Available sizes: S6, S10, S14
- Standard or Double Lock version
- Retaining clip can be pre-assembled in 2 possible positions

- No cross-section jumps
- Operating pressure 2 bar
- Operating temperature range -40 °C to +85 °C
- Pre-assembled lines
- Customer-specific male counterparts
- Integration of customized manifolds possible



Comparison:  
SAE 11,8  
VDA NW8  
VOSS 270 S10

VOSS Automotive, Inc. · 4640 Hillegas Road · Fort Wayne, IN 46818 · USA  
Phone: +1 260-373-2277 · customersvc@us.voss.net · [www.vossusa.com](http://www.vossusa.com)

VOSS Automotive GmbH · P.O. Box 15 40 · 51679 Wipperfürth · Leiersmühle 2-6 · 51688 Wipperfürth · Germany  
Phone: +49 2267 63-0 · Fax: +49 2267 63-5982 · automotive@voss.net · [www.voss.net](http://www.voss.net)